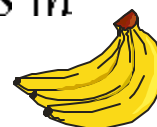




THE CONSUMER PRICE INDEX

*Annual, Semi-Annual and Quarterly Trends in
Saint Lucia's Price Movements*

For 1998



Gov't Statistics Department
Cheriki Bldg, Micoud st.

FOREWORD

The Statistics Department is pleased to present this Annual Publication on the Consumer Price Index. The Consumer Price Index provides a measure of the level of inflation occurring in the country at a given time.

The statistics department takes this opportunity to thank all persons and businesses who provide information on prices which made it possible for the calculation, on a timely basis of the indices maintained in this report. Special thanks to the staff who collected the prices from the various pricing outlets.

DEPUTY DIRECTOR FINANCE (STATISTICS)

TABLE OF CONTENTS

FOREWARD	i
ANNUAL REVIEW	iv
EXPLANATORY NOTES	v

MAIN TABLES

TABLE 1	Mean Annual Percentage Change By Main Groups 1988 -1998	1
TABLE 2	Point To Point (December to December) and Mean Annual Percentage Change, 1991-1998	2 - 3
TABLE 3	Quarterly Percentage Change For all Major Groups, 1993 -1998	4 - 5
TABLE 4	Semi-Annual Percentage Change for all Major Groups, 1992-1998	6
TABLE 5	Mean Annual And Quarterly Indices For All Major Groups 1989 - Jun 1999	7- 8
TABLE 6	Consumer Price Index For Main Groups And Subgroups, 1996	9
TABLE 7	Consumer Price Index For Main Groups And Subgroups, 1997	10
TABLE 8	Consumer Price Index For Main Groups And Subgroups, 1998.....	11
TABLE 9	Monthly Consumer Price Index, 1992 - 1998	12 -13
TABLE10	Monthly Percentage Change Consumer Price Index, 1992 -1998	14 -15

TABLE 11	Average Price Of Selected Commodities April 1984 - April 1998	16
TABLE 12	Base Year Average Expenditure.....	17
TABLE 13	Movement of Nutrients - Cost of Economical Diets (2400 Calories) January to December 1995 –1998.....	18
TABLE14	All Item (Old Series) Price Index, 1964 - 1985	19

LIST OF CHARTS

CHART 1	Mean Annual Percentage Change By Main Groups, 1986 –1998	20
CHART 2	Point To Point (December to December) Indices By Main Groups, 1990 – 1998	21
CHART 3	Quarterly Percentage Change For all Major Groups, 1997	22
CHART 4	Quarterly Percentage Change For all Major Groups, 1998	23
CHART 5	Semi-Annual Percentage Change: Percentage Movements for 6 months,1997-1998	24
CHART 6	CPI Basket Groups	25

ANNUAL REVIEW

The Consumer Price Index measures the rate of inflation and also shows expenditure patterns throughout that period.

The mean annual inflation rate as recorded by the Consumer Price Index for 1998 was 2.8 per cent with a mean annual index of 155.8. The mean annual index for 1997 was 151.5 and the mean inflation rate for 1997 was 0.02 per cent as against 2.8 per cent for 1998. (Table one gives an indication of the mean annual percentage change)

The 1998 Consumer Price Index for December, recorded an inflation rate of 3.6 per cent as apposed to 1.6 per cent in 1997. The index for December 1998 was 158.1 as compared to 152.6 in 1997. (Table two gives an indication of the mean annual percentage change from point to point).

When examining the quarterly movement of prices, the highest movement of prices was seen in the first and last quarter of 1998 and the second and last quarter of 1997. Mean while the decline in the movement of prices was seen in the third quarter of 1998 and the first and third quarter of 1997. (see table three).

As usual, the importance of Food items to household spending patterns made the group 'Food', the most influential group in the movement of the index for 1998. The index for the 'Food' group increased by 4.2% in 1998 as compared to a decline of 2.6% in 1997. The other influential groups which contributed to the movement of the 1998 index were 'Furniture, Furnishings, Household Equipment and Operations' which increased by 3.1%; 'Medical Care and Health expenses' increased by 2.8%; 'Recreation, Entertainment, Education and Cultural Services' and 'Clothing and Footwear' 2.6% respectively.



IMPORTANCE OF PRICES

Price is one of the chief regulating factors of our economic activities due to the development of the market mechanism for the exchange of goods and services. To the consumer price is a principal factor in the allocation of his income amongst the various goods and services needed to maintain and enjoy life. To the producer and distributor, price is a main consideration in determining the manner in which resources are channeled for the production of these goods and services.

Government too has a vital interest in prices and price changes.

Price changes:

- (a) create welfare change*
- (b) upset contractual obligations*
- (c) alter terms of trade*
- (d) are generally considered to be a signal of underlying changes in the economy.*

To the consumer and producer, price changes are indicators of the need for adjustment to changes in economic conditions.

WHAT IS THE CONSUMER PRICE INDEX

The Consumer Price Index is a statistical measure of changes in prices through time on a constant basket of goods and services. The Consumer Price Index measures changes in prices which are the most important causes in changes in the cost of living, but it does not indicate how much families actually spend to defray their living expenses.

The index covers everything people buy for their living – food, beverages, clothing, footwear, automobiles, house furnishing, house hold supplies, fuel, drugs , recreational goods, fees to doctors, beauty cost, rent, repair cost, transportation fares, public utility rates, etc. It deals with prices people actually charge to consumers.

HOW IS THE CONSUMER PRICE INDEX USED?

Almost all St.Lucians in one way or another, are affected by the Consumer Price Index. Below are listed some broad uses of the consumer price index:-

- (a) To assess changes in the purchasing power of the dollar*
- (b) For use in negotiation of contracts*
- (c) To determine the level of prices in assessing inflation, deflation, stability,etc.*
- (d) To determine economic growth*
- (e) Determine the welfare of both consumer and producer.*

SOURCES OF THE CONSUMER PRICE INDEX

The weighting factor, the list of items included in the market basket and the area in which the price data was collected for calculating the index was based on a Household Budget Survey which was conducted during the period September to November 1982 in the Castries Administrative Area, among a sample of 170 urban, 157 suburban and 154 rural households.

THE MARKET BASKET

The sample of about One Hundred and Eighty Six items is contained in the "Market Basket" for pricing, since it is not feasible or necessary to obtain price quotations on every thing that consumer buy in order to obtain a valid index of changes in consumer prices. These One Hundred and Eighty Six items are divided into ten broad categories as listed below:-

Group	Items	Weight
Food	82	467.51
Beverage & Tobacco	5	28.17
Clothing & Footwear	16	64.97
Housing	7	135.34
Fuel & Light	4	44.95
Furniture, Furnishings, Household Equipment And operations	11	57.71
Medical Care and Health Expenses	12	22.78
Transport and		

Communications	10	63.48
Recreation, Entertainment, Education and Cultural Services	12	32.36
Miscellaneous Goods And Services	27	82.73

PRICE DATA COLLECTION

Prices are obtained personal visits to the representative sample of the retail outlets and service establishments where consumers buy goods and services. Rental rates are obtained on a semi annual basis about twelve tenants.

With respect to food items priced at the Central Market the Department purchases these food items to obtain a proper unit price.

Detailed specification to describe the selected items in the "Food Basket" are prepared for price collection in order to ensure that the index reflects only changes in prices and not changes due to quality or quantity differences. Statistical personnel examine merchandise in the stores to determine whether the goods and services for which they record prices conform to the specifications.

Pricing of goods and services are done on one to two consecutive days each month. This pricing starts on the second Tuesday of each month. Domestic rate for electricity is obtained by mail.

INDEX CALCULATION

The index is constructed by calculating the price relative of each item using current price and base year price. This

price relative is then multiplied by the weight of the item to give a revised weight. The revised weights for each item are summed and divided by the total weight in the base period then multiplied by 100 to give an index figure. The index in the base period is 100. The weights of these items were determined from the 1982 Household Budget Survey which gave an indication of the relative magnitude of expenditure devoted to the acquisition of particular goods for household consumption when compared to other goods in the typical household basket. Since items don't share equal importance in the budget it is both reasonable and desirable to assign weights according to money aggregates allotted in the family purse. For example an increase in the price of curry powder would not affect the family purse to the extent that an increase in the price of bread would. Since bread is bought in larger quantities and with greater frequencies than curry powder.

The formula used to calculate the Consumer Price Index is a Fixed Based Weighted.

LIMITATIONS OF THE INDEX

The index may not be applicable to all questions about price movements for all population groups. For example, the index is designed to represent the average movement of prices for an average income household. Also the Consumer Price Index does not provide data separately, for the rate of inflation experienced by any particular demographic subgroup of the population such as the elderly.

A further limitation is that the Consumer Price Index is not a complete measure of

price changes. Because the index is estimated from a sample of consumer purchases, the results may deviate slightly from those which would be obtained if all consumer transactions were covered. These sampling or estimating errors are statistical limitations of the index.

USING THE INDEX NUMBERS

1. MEASURING a year to year Price Change

The price change between January 1995 and January 1996 is calculated as follows:-

$$\frac{(\text{January 1996} - \text{January 1995}) \times 100}{\text{January 1995}}$$



MEAN ANNUAL PERCENTAGE CHANGE

By Main Groups, 1988 - 1998

Table One

GROUPS	WEIGHTS	1988	1989	1990	1991	1992	1993	1994	1995	1996	1997	1998
ALL GROUPS	1,000.00	1.4	3.7	3.8	6.5	5.6	0.8	2.7	5.9	0.9	0.0	2.8
FOOD	467.51	(1.1)	4.1	4.7	8.9	5.0	(0.6)	4.9	7.6	(0.4)	(2.6)	4.2
BEVERAGE AND TOBACCO	28.17	4.1	3.8	2.4	3.6	1.7	3.1	1.0	2.7	1.5	0.2	(0.1)
CLOTHING AND FOOTWEAR	64.97	(4.5)	5.7	11.7	(5.7)	21.1	2.0	(2.0)	6.0	2.3	5.1	2.6
HOUSING	135.34	2.6	0.4	0.8	0.5	0.0	0.0	(0.2)	6.7	0.5	0.0	0.2
FUEL AND LIGHT	44.95	7.6	8.3	5.1	3.0	4.3	(0.5)	(0.9)	1.3	4.4	1.9	(2.8)
FURNITURE, FURNISHINGS, HOUSEHOLD EQUIPMENT AND OPERATIONS	57.71	18.7	3.7	4.7	3.1	2.8	0.6	0.6	2.2	1.5	4.0	3.1
MEDICAL CARE AND HEALTH EXPENSES	22.78	7.5	0.3	(0.6)	4.7	2.9	20.4	12.0	4.5	3.2	5.3	2.8
TRANSPORT AND COMMUNICATIONS	63.48	8.1	3.0	0.9	7.1	6.4	3.8	1.7	4.7	3.7	1.4	1.5
RECREATION, ENTERTAINMENT, EDUCATION AND CULTURAL SERVICES	32.36	6.1	12.4	3.7	3.8	5.2	1.2	0.7	3.0	3.8	4.9	2.6
MISCELLANEOUS GOODS AND SERVICES	82.73	(3.9)	1.2	2.1	5.4	7.9	1.6	0.2	2.1	2.2	2.4	3.1

Base Year: April 1984 = 100

**POINT TO POINT (DECEMBER TO DECEMBER) and
MEAN ANNUAL PERCENTAGE (%) CHANGE**

For All Groups And Main Groups 1991 - 1998

Table Two

GROUPS	1991		1992		1993		1994	
	POINT TO POINT DEC 91/90	MEAN ANNUAL CHANGE	POINT TO POINT DEC 92/91	MEAN ANNUAL CHANGE	POINT TO POINT DEC 93/92	MEAN ANNUAL CHANGE	POINT TO POINT DEC 94/93	MEAN ANNUAL CHANGE
ALL GROUPS	7.1	6.5	3.1	5.6	0.7	0.8	5.9	2.7
FOOD	10.5	8.9	2.5	5.0	0.4	(0.6)	9.8	4.9
BEVERAGE AND TOBACCO	2.3	3.6	1.2	1.7	2.3	3.1	3.0	1.0
CLOTHING AND FOOTWEAR	3.9	(5.7)	15.3	21.1	1.3	2	(0.8)	(2.0)
HOUSING	0.5	0.5	(0.1)	0.0	0.1	0.0	(0.3)	(0.2)
FUEL AND LIGHT	(4.8)	3.0	3.4	4.3	(0.6)	(0.5)	(0.5)	(0.9)
FURNITURE, FURNISHINGS, HOUSEHOLD EQUIPMENT AND OPERATIONS	3.8	3.1	0.9	2.8	(0.1)	0.6	1.6	0.6
MEDICAL CARE AND HEALTH EXPENSES	6.7	4.7	(3.7)	2.9	27.6	20.4	12.4	12.0
TRANSPORT AND COMMUNICATIONS	7.2	7.1	3.7	6.4	1.8	3.8	5.1	1.7
RECREATION, ENTERTAINMENT, EDUCATION AND CULTURAL SERVICES	3.9	3.8	6.2	5.2	(0.6)	1.2	0.5	0.7
MISCELLANEOUS GOODS AND SERVICES	12.0	5.4	2.1	7.9	(4.4)	1.6	5.8	0.2

(Continued)

**POINT TO POINT (DECEMBER TO DECEMBER) and
MEAN ANNUAL PERCENTAGE CHANGE**

For All Groups And Main Groups 1991 - 1998

Table Two (cont'd)

1995		1996		1997		1998		GROUPS
POINT TO POINT DEC 95/94	MEAN ANNUAL CHANGE	POINT TO POINT DEC 96/95	MEAN ANNUAL CHANGE	POINT TO POINT DEC 97/96	MEAN ANNUAL CHANGE	POINT TO POINT DEC 98/97	MEAN ANNUAL CHANGE	
4.6	5.9	(2.3)	0.91	1.6	0.02	3.6	2.8	ALL GROUPS
5.9	7.6	(7.2)	(0.4)	0.6	(2.6)	6.6	4.2	FOOD
2.5	2.7	(0.1)	1.5	0.7	0.2	(1.1)	(0.1)	BEVERAGE AND TOBACCO
3.0	5.9	3.3	2.3	6.3	5.1	(0.7)	2.6	CLOTHING AND FOOTWEAR
7.3	6.7	(0.1)	0.5	0.2	0	0	0.2	HOUSING
2.8	1.3	5.3	4.4	(0.6)	1.9	(4.4)	(2.8)	FUEL AND LIGHT
2.2	2.2	2.9	1.5	4.3	4	3.2	3.1	FURNITURE, FURNISHINGS, HOUSEHOLD EQUIPMENT AND OPERATIONS
0.7	4.5	4.8	3.2	4.7	5.3	5.7	2.8	MEDICAL CARE AND HEALTH EXPENSES
2.1	4.7	3.7	3.7	1.4	1.4	0.7	1.5	TRANSPORT AND COMMUNICATIONS
3.8	3.0	7.6	3.8	0.6	4.9	3.4	2.6	RECREATION, ENTERTAINMENT, EDUCATION AND CULTURAL SERVICES
2.0	2.1	2.2	2.2	3.2	2.4	2.5	3.1	MISCELLANEOUS GOODS AND SERVICES

Base Year: April 1984 = 100

QUARTERLY PERCENTAGE (%) CHANGE
For All Major Groups and Main Groups Indices, 1993 - 1998

Table Three

PERCENTAGE (%) MOVEMENTS FOR 3 MONTHS TO:-

GROUPS	WEIGHTS	1 9 9 3				1 9 9 4				1 9 9 5			
		Mar	June	Sep	Dec	Mar	June	Sep	Dec	Mar	June	Sep	Dec
ALL GROUPS	1,000.00	0.9	(0.6)	(1.4)	2.0	(1.0)	3.0	1.1	2.8	1.2	0.5	1.5	1.3
FOOD	467.51	0.8	(1.4)	(2.9)	4.0	(1.5)	5.1	1.2	4.7	0.1	1.0	2.7	1.9
BEVERAGE AND TOBACCO	28.17	2.9	(0.5)	0.1	(0.2)	0.3	1.0	(0.7)	2.4	0.0	0.0	0.4	2.0
CLOTHING AND FOOTWEAR	64.97	(1.3)	0.0	0.2	2.4	(7.0)	2.7	2.9	1.0	2.3	0.0	0.2	0.6
HOUSING	135.34	0.1	(0.1)	0.0	0.1	(0.2)	(0.2)	0.0	0.1	7.3	0.0	0.1	0.0
FUEL AND LIGHT	44.95	(0.5)	0.8	(1.6)	0.8	(0.8)	(0.2)	0.5	0.0	1.0	1.4	(1.4)	1.8
FURNITURE, FURNISHINGS, HOUSEHOLD EQUIPMENT AND OPERATIONS	57.71	1.7	(1.7)	0.1	(0.1)	1.0	0.0	0.1	0.6	1.7	(1.0)	0.8	0.7
MEDICAL CARE AND HEALTH EXPENSES	22.78	20.0	2.1	0.4	3.7	6.7	0.2	5.2	(0.1)	0.7	(0.6)	(0.1)	0.7
TRANSPORT AND COMMUNICATIONS	63.48	0.9	0.9	0.4	(0.5)	0.0	1.0	0.5	3.4	1.3	0.1	0.0	0.7
RECREATION, ENTERTAINMENT, EDUCATION AND CULTURAL SERVICES	32.36	(1.6)	0.0	(1.5)	2.6	(0.5)	(0.5)	1.1	0.3	(0.5)	3.3	1.1	(0.2)
MISCELLANEOUS GOODS AND SERVICES	82.73	0.4	0.0	(0.4)	(4.4)	2.2	2.2	0.6	0.7	0.2	(0.3)	0.5	1.6

(CONT'D)

QUARTERLY PERCENTAGE (%) CHANGE
For All Major Groups and Main Groups Indices, 1993 - 1998

Table Three (cont'd)

PERCENTAGE (%) MOVEMENTS FOR 3 MONTHS TO:-

1 9 9 6				1 9 9 7				1 9 9 8				WEIGHTS	GROUPS
Mar	June	Sep	Dec	Mar	June	Sep	Dec	Mar	June	Sep	Dec		
(0.9)	0.9	(3.0)	0.7	(0.4)	1.9	(0.5)	0.5	1.4	0.8	(0.4)	1.7	1,000.00	ALL GROUPS
(2.3)	1.1	(6.6)	0.6	(1.5)	3.9	(1.5)	(0.2)	3.3	1.7	(1.3)	2.9	467.51	FOOD
(0.4)	(0.2)	0.5	0.0	0.0	(0.3)	0.3	0.7	0.7	(1.0)	(1.5)	0.7	28.17	BEVERAGE AND TOBACCO
0.0	1.6	0.3	1.3	4.3	(1.7)	0.8	2.8	0.5	(1.1)	(0.1)	0.0	64.97	CLOTHING AND FOOTWEAR
0.0	0.0	(0.2)	0.1	0.0	(0.1)	0.1	0.2	0.0	(0.1)	0.1	0.0	135.34	HOUSING
2.1	1.4	(1.0)	2.7	(0.5)	(0.7)	(0.7)	1.3	(1.8)	(0.1)	(2.7)	0.2	44.95	FUEL AND LIGHT
(0.1)	0.0	2.2	0.8	(0.1)	1.3	2.7	0.3	(0.4)	0.3	0.8	2.4	57.71	FURNITURE, FURNISHINGS, HOUSEHOLD EQUIPMENT AND OPERATIONS
(0.1)	6.0	(0.9)	(0.2)	1.1	3.7	0.3	(0.4)	(0.4)	(0.2)	6.3	0.0	22.78	MEDICAL CARE AND HEALTH EXPENSES
3.0	0.6	0.1	0.1	0.5	0.2	(0.3)	0.9	(0.4)	1.2	0.4	(0.5)	63.48	TRANSPORT AND COMMUNICATIONS
0.0	0.2	5.1	2.2	(1.5)	0.1	2.6	(0.6)	0.4	0.0	2.8	0.3	32.36	RECREATION, ENTERTAINMENT, EDUCATION AND CULTURAL SERVICES
(0.1)	0.1	1.5	0.8	(0.4)	0.2	0.6	2.8	0.1	(0.1)	0.9	1.6	82.73	MISCELLANEOUS GOODS AND SERVICES

Base Year: April 1984 = 100

SEMI-ANNUAL PERCENTAGE (%) CHANGE
For All Major Groups and Main Groups Indices, 1992 - 1998

Table Four

PERCENTAGE(%) MOVEMENTS FOR 6 MONTHS TO :-

GROUPS	WEIGHTS	1 9 9 2		1 9 9 3		1 9 9 4		1 9 9 5		1 9 9 6		1 9 9 7		1 9 9 8	
		June	Dec	June	Dec	June	Dec	June	Dec	June	Dec	June	Dec	June	Dec
ALL GROUPS	1,000.00	2.8	0.3	0.2	0.4	1.9	3.9	1.8	2.8	0	-2.3	1.5	0.1	2.3	1.3
FOOD	467.51	3.6	-1	-0.6	1	3.6	6	1.1	4.7	-1.3	-6	2.4	-1.7	5	1.6
BEVERAGE AND TOBACCO	28.17	0.5	0.8	2.4	-0.1	1.3	1.6	0	2.5	-0.6	0.5	-0.3	1	-0.4	-0.8
CLOTHING AND FOOTWEAR	64.97	11.6	3.3	-1.3	2.5	-4.5	3.9	2.3	0.7	1.6	1.7	2.6	3.6	-0.6	-0.1
HOUSING	135.34	-0.1	0	0	0.1	-0.4	0.1	7.3	0.1	0	-0.1	-0.1	0.3	-0.1	0.1
FUEL AND LIGHT	44.95	3.1	0.3	0.3	-0.8	-1	0.5	2.5	0.3	3.5	1.8	-1.2	0.6	-1.9	-2.6
FURNITURE, FURNISHINGS, HOUSEHOLD, EQUIPMENT AND OPERATIONS	57.71	0.9	0	-0.1	0	1	0.6	0.7	1.4	-0.1	3	1.2	3.1	-0.1	3.2
MEDICAL CARE AND HEALTH EXPENSES	22.78	-1.3	-2.4	22.6	4.1	7	5	0.1	0.6	5.9	-1.1	4.8	-0.1	-0.6	6.3
TRANSPORT AND COMMUNICATIONS	63.48	1.6	2	1.8	-0.1	1	4	1.4	0.7	3.6	0.2	0.7	0.6	0.9	-0.1
RECREATION, ENTERTAINMENT, EDUCATION AND CULTURAL SERVICES	32.36	1.1	5.1	-1.6	1	-1	1.5	2.8	0.9	0.2	7.4	-1.4	2	0.4	3
MISCELLANEOUS GOODS AND SERVICES	82.73	-0.6	2.8	0.4	-4.7	4.5	1.3	-0.1	2.1	0	2.2	-0.2	3.4	0	2.5

Base Year: April 1984 = 100

CONSUMER PRICE INDICES

Mean Annual and Mean Quarterly Indices for Major Groups, 1989 - 1998

Table Five

YEAR/ QUARTER	ALL GROUPS	FOOD	BEVERAGE AND TOBACCO	CLOTHING AND FOOTWEAR	HOUSING	FUEL AND LIGHT
WEIGHTS	1,000.00	467.51	28.17	64.97	135.34	44.95
MEAN ANNUAL						
1989	117.3	120.4	120.9	124.7	103.7	105.9
1990	121.8	126.0	123.8	139.3	104.5	111.3
1991	129.7	137.2	128.2	147.3	105.0	114.6
1992	137.0	144.0	130.4	178.4	105.0	119.5
1993	138.1	143.1	134.5	181.9	105.0	118.9
1994	141.8	150.1	135.9	178.2	104.8	117.8
1995	150.1	161.5	139.5	188.8	111.8	119.3
1996	151.5	160.9	141.6	193.1	112.4	124.6
1997	151.5	156.7	141.9	203.0	112.4	126.9
1998	155.8	163.3	141.8	208.2	112.6	123.3
MEAN QUARTERLY						
1989 MAR	115.8	118.0	120.5	123.9	103.6	102.0
JUN	116.6	118.6	121.2	123.9	103.6	107.6
SEP	118.1	122.0	121.2	125.4	103.6	106.2
DEC	118.8	122.9	122.2	125.5	103.9	107.8
1990 MAR	120.2	124.7	123.7	131.8	104.3	110.7
JUN	121.8	126.8	122.6	139.0	104.5	106.6
SEP	122.0	125.5	123.3	143.0	104.6	107.3
DEC	124.9	126.7	125.4	143.6	104.6	120.5
1991 MAR	128.2	136.3	126.6	144.3	105.0	117.2
JUN	128.5	135.9	127.4	144.8	104.9	113.4
SEP	130.5	138.7	129.3	146.5	105.0	112.5
DEC	131.7	137.8	129.7	153.5	105.0	115.4
1992 MAR	135.8	143.3	130.2	172.4	105.1	117.5
JUN	137.1	144.7	130.4	177.5	105.1	119.2
SEP	137.5	144.3	130.5	181.5	105.0	120.4
DEC	137.7	143.9	130.9	182.2	105.0	121.0
1993 MAR	139.4	146.0	135.1	180.8	105.0	118.6
JUN	137.3	141.2	134.8	181.1	105.0	120.1
SEP	137.8	142.3	134.8	181.4	105.0	118.4
DEC	138.0	143.0	134.6	184.0	105.1	118.5
1994 MAR	138.6	145.3	135.1	174.1	105.0	117.0
JUN	139.8	147.1	135.6	174.2	104.8	117.5
SEP	143.0	151.7	135.5	181.5	104.7	118.1
DEC	145.7	156.3	137.6	183.0	104.7	118.5
1995 MAR	149.4	161.4	138.5	187.9	109.9	117.9
JUN	149.5	160.5	138.5	188.5	112.4	119.3
SEP	150.9	163.2	139.1	188.7	112.5	119.2
DEC	150.3	160.9	141.9	189.9	112.5	120.8
1996 MAR	152.7	165.5	141.3	189.9	112.5	121.6
JUN	153.3	165.4	141.2	193.0	112.5	125.4
SEP	150.7	158.8	141.7	193.2	112.5	124.2
DEC	149.1	153.9	141.8	196.2	112.4	127.2
1997 MAR	150.0	154.4	141.7	204.7	112.4	128.4
JUN	150.9	156.3	141.5	201.0	112.3	126.3
SEP	153.0	160.0	141.6	200.3	112.3	125.1
DEC	152.1	156.3	142.7	205.9	112.5	127.5
1998 MAR	154.3	160.6	143.1	209.7	112.6	125.1
JUN	155.2	162.3	142.0	208.9	112.6	124.9
SEP	156.6	165.3	140.9	207.1	112.6	121.5
DEC	157.0	164.8	141.2	207.1	112.6	121.6
1999 MAR	155.9	162.0	141.7	207.7	112.6	120.5
JUN	159.7	167.3	143.1	214.2	112.6	123.4

(cont'd)

CONSUMER PRICE INDICES

Mean Annual and Mean Quarterly Indices for Major Groups, 1989 - 1998

Table Five (cont'd)

YEAR/ QUARTER	FURNITURE & HOUSEHOLD OPERATIONS	MEDICAL CARE & HEALTH ETC.	TRANSPORT & COMMUNI- CATION	RECREATION ENTERTAINMENT EDUCATION ETC	MISC. GOODS AND SERVICES
WEIGHTS	57.71	22.78	63.48	32.36	82.73
MEAN ANNUAL					
1989	127.7	117.9	120.9	130.3	106.3
1990	133.7	117.2	122.0	135.1	108.5
1991	137.8	122.7	130.6	140.2	114.4
1992	141.7	126.2	139.0	147.5	123.4
1993	142.5	151.9	144.3	149.3	125.4
1994	143.3	170.1	146.7	150.3	125.6
1995	146.4	177.8	153.6	154.8	128.2
1996	148.6	183.5	159.3	160.7	131.0
1997	154.5	193.2	161.6	168.5	134.1
1998	159.3	198.6	164.0	172.9	138.2
MEAN QUARTERLY					
1989 MAR	127.6	118.8	121.6	126.7	105.2
JUN	127.6	119.6	122.4	129.7	105.9
SEP	127.9	116.6	119.3	130.9	107.0
DEC	127.8	116.6	120.2	134.0	106.8
1990 MAR	130.1	116.4	118.9	134.1	105.1
JUN	133.7	115.2	117.8	134.1	108.0
SEP	135.3	116.9	123.7	134.9	110.3
DEC	135.6	120.4	127.6	137.2	110.4
1991 MAR	135.1	117.1	128.2	138.4	108.9
JUN	137.3	120.2	128.5	139.5	112.4
SEP	138.7	126.2	128.9	140.1	116.4
DEC	140.2	127.2	137.0	142.7	120.0
1992 MAR	141.1	125.9	136.9	143.1	122.7
JUN	141.9	126.7	138.9	143.5	122.8
SEP	141.9	126.7	139.6	151.4	123.1
DEC	141.9	125.6	140.6	151.8	125.0
1993 MAR	144.4	148.8	142.9	151.0	125.7
JUN	141.8	150.8	144.4	149.3	126.9
SEP	141.9	152.2	145.0	147.9	126.5
DEC	142.0	155.9	144.9	148.9	122.3
1994 MAR	143.1	162.7	144.3	149.8	122.8
JUN	143.2	164.0	144.8	149.3	125.1
SEP	143.3	176.4	146.3	151.1	126.9
DEC	143.6	177.1	151.6	151.2	127.6
1995 MAR	146.1	178.2	152.8	151.0	127.8
JUN	146.1	177.7	153.7	153.9	127.6
SEP	146.0	177.7	153.7	156.9	127.8
DEC	147.2	177.6	154.1	157.2	129.2
1996 MAR	147.1	177.6	156.3	157.2	130.2
JUN	146.7	182.5	159.9	157.4	130.3
SEP	149.4	187.7	160.4	160.2	131.2
DEC	151.1	186.3	160.5	167.9	132.3
1997 MAR	150.5	187.9	161.4	166.6	132.7
JUN	152.5	193.0	161.7	166.7	132.8
SEP	157.0	196.4	161.6	169.5	133.6
DEC	157.9	195.7	161.8	170.6	137.1
1998 MAR	157.5	195.0	162.1	170.5	137.5
JUN	157.9	194.6	164.0	170.7	137.4
SEP	159.1	198.2	164.8	174.4	138.0
DEC	162.8	206.9	165.3	175.9	140.1
1999 MAR	163.4	208.2	164.2	175.9	141.5
JUN	164.4	213.3	163.8	187.2	143.9

CONSUMER PRICE INDICES FOR GROUPS AND SUB - GROUPS

By Month - 1996

Table Six

Main & Subsidiary Groups	DEC '95	JAN	FEB	MAR	APR	MAY	JUN	JUL	AUG	SEP	OCT	NOV	DEC	AVG.
ALL GROUPS	166.80	166.60	166.00	163.90	166.20	164.20	165.70	160.40	161.20	154.80	151.90	154.00	155.70	160.48
FOOD :	114.90	115.70	115.80	115.90	116.10	116.10	116.10	116.00	116.20	116.20	115.40	115.50	115.50	115.88
Bread & Cereal	153.10	153.10	153.10	153.10	153.10	153.10	153.10	153.10	153.10	153.10	153.10	153.10	153.10	153.10
Fresh Meat	170.00	171.40	170.60	170.60	170.60	174.30	171.80	170.80	168.70	175.70	174.20	173.10	173.10	172.08
Preserved Meat	136.40	137.00	136.20	138.30	137.80	137.50	133.30	134.70	132.50	132.50	140.50	135.00	136.10	135.95
Frozen Meat	210.00	205.40	206.10	206.10	205.20	208.20	208.20	213.30	210.60	210.60	210.60	210.10	210.10	208.71
Fish	139.10	139.10	137.80	141.50	141.20	141.80	141.70	141.70	142.90	142.90	142.40	145.70	149.30	142.33
Milk & Dairy Products	108.00	114.60	116.90	119.40	120.30	114.70	114.50	114.10	112.70	113.60	113.00	113.60	114.20	115.13
Oils & Fats	280.80	266.00	255.70	234.50	246.90	236.20	233.50	200.00	203.80	193.50	179.40	198.00	212.50	221.67
Vegetables	156.10	176.90	198.80	207.90	209.90	205.30	232.30	217.20	224.10	173.20	164.10	159.60	159.40	194.06
Fruits	228.10	224.70	196.30	183.70	188.60	190.10	183.20	207.70	211.40	213.50	205.10	207.30	181.50	199.43
Tubers	109.00	109.00	109.00	109.00	109.00	109.00	109.00	109.00	109.00	109.00	109.00	109.00	109.00	109.00
Sugar	111.60	111.60	111.60	111.60	111.60	111.60	110.60	107.10	100.70	100.70	100.70	102.30	103.10	106.93
Coffee & Cocoa	111.60	110.10	110.00	109.70	110.30	110.60	113.20	112.10	110.00	110.40	106.50	101.90	101.90	108.89
Other Foods	141.90	141.90	142.10	141.40	141.40	141.10	141.10	141.60	141.60	141.80	141.80	141.80	141.80	141.62
BEVERAGE AND TOBACCO :	132.60	132.60	132.60	132.60	132.60	130.90	130.90	130.90	130.90	130.90	130.90	130.90	130.90	131.47
Non - Alcoholic Beverages	147.30	147.40	148.00	145.90	145.90	146.50	146.50	147.90	147.90	148.80	148.80	148.80	148.80	147.60
Alcoholic Beverages	144.50	144.50	144.50	144.50	144.50	144.50	144.50	144.50	144.50	144.50	144.50	144.50	144.50	144.50
Tobacco	189.90	189.90	189.90	189.90	189.90	196.20	193.00	193.00	192.90	193.60	196.20	196.20	196.20	193.08
CLOTHING AND FOOTWEAR :	214.30	214.30	214.30	214.30	214.30	222.40	217.70	217.70	217.50	218.60	222.40	222.40	222.40	218.19
Clothing	136.40	136.40	136.40	136.40	136.40	139.00	139.00	139.00	139.00	139.00	139.00	139.00	139.00	138.13
Footwear	112.50	112.50	112.50	112.50	112.50	112.50	112.50	112.40	112.30	112.30	112.40	112.40	112.40	112.43
HOUSING :	103.20	103.20	103.20	103.20	103.20	103.20	103.20	103.10	103.10	103.10	103.10	103.10	103.10	103.15
Rent & Repairs	303.30	303.30	303.30	303.30	303.30	303.30	303.30	303.30	303.30	303.30	303.30	303.30	303.30	303.30
Water Charges	121.40	121.10	119.80	123.90	126.10	124.60	125.60	123.50	124.70	124.40	126.40	127.40	127.80	124.61
FUEL AND LIGHT :	90.70	90.30	87.60	100.20	95.90	97.30	99.30	95.00	97.50	96.80	100.90	102.90	103.60	97.28
Electricity	118.60	118.60	118.60	118.60	118.60	118.60	118.60	118.60	118.60	118.60	118.60	118.60	118.60	118.60
Gas	182.90	182.90	182.90	182.90	182.90	182.90	182.90	182.90	182.90	182.90	182.90	182.90	182.90	182.90
Other Fuels	147.20	147.20	147.00	147.00	146.60	146.40	147.00	149.50	148.60	150.20	150.50	151.40	151.40	148.57
FURNITURE, FURNISHINGS, HOUSEHOLD EQUIPMENT AND OPERATIONS :	161.30	161.30	161.30	161.30	161.30	161.30	161.30	162.40	162.40	162.40	162.40	162.40	162.40	161.85
Furniture & Fixtures	140.30	140.30	140.30	140.30	140.30	139.50	139.50	138.70	134.10	142.00	145.40	146.30	146.30	141.08
Durables	124.30	124.30	123.80	123.90	123.10	123.10	124.20	129.10	129.20	129.20	128.40	129.90	129.80	126.50
Household Operations	285.20	285.20	285.20	285.20	285.20	285.20	285.20	285.20	285.20	285.20	285.20	285.20	285.20	285.20
Domestic Services	178.50	177.30	177.30	178.30	178.70	179.70	189.00	187.70	188.00	187.30	186.00	186.00	187.00	183.53
MEDICAL CARE AND HEALTH EXPENSES :	151.70	150.10	150.10	151.50	152.10	153.50	151.80	149.90	150.00	149.30	147.40	147.40	148.80	150.16
Medical Products	239.80	239.80	239.80	239.80	239.80	239.80	274.50	274.50	274.50	274.50	274.50	274.50	274.50	260.04
Services Of Physicians , etc.	154.80	154.60	155.00	159.40	159.40	160.10	160.30	160.30	160.50	160.50	160.50	160.30	160.60	159.29
TRANSPORT AND COMMUNICATIONS :	187.70	187.70	187.70	187.70	187.70	189.20	189.20	189.20	189.70	189.70	189.70	189.80	189.80	188.93
Personal Transport	128.20	127.70	128.70	139.30	139.30	139.30	139.60	139.70	139.70	139.70	139.80	139.00	139.50	137.60
Purchased Transport	105.70	105.70	105.70	105.70	105.70	105.70	105.70	105.70	105.70	105.70	105.70	105.70	105.70	105.70
Communications	157.20	157.20	157.20	157.20	157.20	157.50	157.50	157.50	157.60	165.50	165.50	169.10	169.10	160.68
RECREATION, ENTERTAINMENT, EDUCATION AND CULTURAL SERVICES :	108.90	108.90	108.90	108.90	108.90	110.80	110.80	110.80	108.10	108.10	108.10	108.10	108.10	109.04
Equipment & Accessories	126.60	126.60	126.60	126.60	126.60	126.60	126.60	126.60	126.60	126.60	126.60	126.60	126.60	126.60
Entertainment Services	176.50	176.50	176.50	176.50	176.50	176.50	176.50	176.50	177.90	182.60	182.60	192.40	192.40	180.28
Books, Newspapers & Magazines	279.50	279.50	279.50	279.50	279.50	279.50	279.50	279.50	279.50	341.00	341.00	341.00	341.00	300.00
Education	129.70	130.20	130.20	130.20	130.20	130.30	130.30	130.30	131.00	132.20	131.80	131.80	133.20	130.98
MISCELLANEOUS GOODS AND SERVICES :	124.20	128.00	128.00	128.00	128.00	130.50	130.50	130.50	130.50	130.50	130.50	130.50	130.50	129.67
Hair Care	130.10	130.00	130.00	130.00	130.00	129.30	129.30	129.30	131.80	130.10	130.10	130.10	131.20	130.03
Personal Care	168.90	168.90	168.90	168.90	168.90	168.90	168.90	168.90	191.00	191.00	191.00	191.00	215.20	180.13
Other Personal Goods	121.70	121.70	121.70	121.70	121.70	121.70	121.70	121.70	121.70	121.70	121.70	121.70	121.70	121.70
Writing & Drawing Equipment & Supplies	128.40	128.40	128.40	128.40	128.40	128.40	128.40	128.40	128.40	128.40	130.00	130.00	130.00	128.80
Restaurants & Cafes														

CONSUMER PRICE INDICES FOR GROUPS AND SUB - GROUPS

By Month - 1997

Table Seven

Main & Subsidiary Groups	JAN	FEB	MAR	APR	MAY	JUN	JUL	AUG	SEP	OCT	NOV	DEC	AVG.
ALL GROUPS	155.40	154.30	153.40	154.30	155.30	159.40	163.20	159.70	157.00	155.40	156.80	155.70	160.48
FOOD :													
Bread & Cereal	115.50	115.50	114.80	114.80	115.20	115.10	115.10	115.20	115.20	115.20	115.20	115.50	115.19
Fresh Meat	153.10	153.10	153.10	153.10	153.10	153.10	153.10	153.10	153.10	153.10	153.10	153.10	153.10
Preserved Meat	173.10	173.10	173.30	173.30	174.70	174.10	174.60	174.00	174.30	179.50	180.00	179.80	175.32
Frozen Meat	135.90	136.10	136.20	136.20	133.30	136.20	136.10	136.40	134.70	136.80	135.60	135.00	135.71
Fish	210.10	210.10	212.10	212.10	206.50	206.50	206.50	204.90	204.90	215.50	215.50	212.50	209.77
Milk & Dairy Products	150.20	150.20	150.20	150.40	145.00	142.20	140.90	141.00	140.20	140.20	140.10	140.10	144.23
Oils & Fats	113.40	113.40	113.40	113.40	112.90	112.60	110.10	119.40	120.10	120.60	121.00	121.20	115.96
Vegetables	213.20	208.10	199.30	193.50	206.90	222.60	234.20	207.70	194.10	203.90	213.30	219.00	209.65
Fruits	157.50	165.80	173.80	191.20	194.20	197.50	214.50	201.30	191.40	155.60	158.10	152.80	179.48
Tubers	174.70	146.60	137.10	138.10	135.60	168.50	177.60	210.60	222.10	200.30	193.40	188.00	174.38
Sugar	109.00	109.00	109.00	109.00	109.00	109.00	109.00	109.00	109.00	109.00	109.00	109.00	109.00
Coffee & Cocoa	103.10	103.10	103.10	103.10	103.10	102.60	103.10	116.50	116.50	116.50	116.50	115.70	108.58
Other Foods	101.90	101.90	101.50	101.30	102.30	102.30	104.70	104.70	110.00	111.60	115.40	115.90	106.13
BEVERAGE AND TOBACCO :	141.80	141.80	141.80	141.80	141.40	141.40	141.30	141.70	141.80	142.60	142.60	142.80	141.90
Non - Alcoholic Beverages	130.90	130.90	130.90	130.90	130.90	130.90	130.90	130.90	130.90	130.90	130.90	131.30	130.93
Alcoholic Beverages	148.80	148.80	148.80	148.80	148.80	148.80	148.60	148.60	148.70	151.20	151.20	151.30	149.37
Tobacco	144.50	144.50	144.50	144.50	143.30	143.30	143.30	144.40	144.50	144.50	144.50	144.50	144.19
CLOTHING AND FOOTWEAR :	203.80	205.50	204.70	204.30	197.30	201.30	198.70	199.40	202.90	202.90	206.20	209.20	203.02
Clothing	230.40	233.70	232.50	231.90	226.80	232.60	229.30	230.30	233.20	233.20	237.40	243.70	232.92
Footwear	145.50	144.10	144.10	144.10	133.50	133.70	132.50	132.50	137.40	137.40	138.70	135.00	138.21
HOUSING :	112.40	112.40	112.40	112.40	112.30	112.30	112.30	112.30	112.40	112.50	112.50	112.60	112.40
Rent & Repairs	103.10	103.10	103.10	103.10	103.10	103.10	103.00	103.10	103.10	103.20	103.20	103.30	103.13
Water Charges	303.30	303.30	303.30	303.30	303.30	303.30	303.30	303.30	303.30	303.30	303.30	303.30	303.30
FUEL AND LIGHT :	129.40	128.70	127.20	127.20	125.40	126.30	123.90	126.10	125.40	127.30	128.30	127.00	126.85
Electricity	107.00	105.40	102.50	102.50	98.90	100.70	95.90	100.20	98.90	102.70	104.80	102.00	101.79
Gas	118.60	118.60	118.60	118.60	118.60	118.60	118.60	118.60	118.60	118.60	118.60	118.60	118.60
Other Fuels	182.90	182.90	182.90	182.90	182.90	182.90	182.90	182.90	182.90	182.90	182.90	182.90	182.90
FURNITURE, FURNISHINGS, HOUSEHOLD EQUIPMENT AND OPERATIONS :	149.70	150.60	151.20	151.20	153.20	153.20	156.30	157.40	157.40	157.70	158.10	157.90	154.49
Furniture & Fixtures	157.40	157.30	157.30	157.30	157.30	157.30	157.30	161.90	161.90	161.90	162.50	162.50	159.33
Durables	144.20	148.60	151.50	151.50	152.70	152.70	156.70	156.70	156.70	157.00	158.40	157.60	153.69
Household Operations	129.80	129.80	129.80	129.80	133.30	133.30	133.60	133.60	133.60	133.90	133.90	133.90	132.36
Domestic Services	285.20	285.20	285.20	285.20	285.20	285.20	318.20	318.20	318.20	318.20	318.20	318.20	301.70
MEDICAL CARE AND HEALTH EXPENSES :	187.30	187.30	189.00	188.90	194.00	196.00	196.40	196.40	196.50	195.50	195.70	195.80	193.23
Medical Products	148.80	148.80	151.20	151.10	158.30	161.20	163.40	163.40	163.50	162.00	162.20	162.40	158.03
Services Of Physicians , etc.	275.60	275.60	275.60	275.60	275.60	275.60	272.20	272.20	272.20	272.20	272.20	272.20	273.90
TRANSPORT AND COMMUNICATIONS :	161.50	161.20	161.40	161.40	161.80	161.80	161.70	161.70	161.30	161.30	161.30	162.80	161.60
Personal Transport	191.90	191.50	191.50	191.50	191.80	191.80	191.50	191.50	191.50	191.50	191.50	191.90	191.62
Purchased Transport	139.50	139.30	139.70	139.70	140.20	140.30	140.30	140.30	139.50	139.50	139.50	142.70	140.04
Communications	105.70	105.70	105.70	105.70	105.70	105.70	105.70	105.70	105.70	105.70	105.70	105.70	105.70
RECREATION, ENTERTAINMENT, EDUCATION AND CULTURAL SERVICES :	166.60	166.60	166.60	166.60	166.80	166.80	168.80	170.50	171.10	170.90	170.90	170.10	168.53
Equipment & Accessories	109.30	109.30	109.30	109.30	110.90	110.90	110.90	110.90	110.90	109.50	109.50	105.00	109.64
Entertainment Services	126.60	126.60	126.60	126.60	126.60	126.60	126.60	126.60	126.60	126.60	126.60	126.60	126.60
Books, Newspapers & Magazines	185.00	185.00	185.00	185.00	185.00	185.00	190.40	195.00	196.60	196.70	196.70	196.70	190.18
Education	341.00	341.00	341.00	341.00	341.00	341.00	341.00	341.00	341.00	341.00	341.00	341.00	341.00
MISCELLANEOUS GOODS AND SERVICES :	132.70	132.70	132.70	132.70	132.70	132.90	133.50	133.70	133.70	136.50	137.40	137.40	134.05
Hair Care	130.50	130.50	130.50	130.50	130.50	130.50	130.90	130.90	130.90	130.90	130.90	130.90	130.70
Personal Care	130.30	130.30	130.30	130.30	130.30	130.70	131.80	132.20	132.20	138.00	139.90	139.90	133.02
Other Personal Goods	215.20	215.20	215.20	215.20	215.20	215.20	215.20	215.20	215.20	215.20	215.20	215.20	215.20
Writing & Drawing Equipment & Supplies	121.70	121.70	121.70	121.70	121.70	121.70	121.70	121.70	121.70	121.70	121.70	121.70	121.70
Restaurants & Cafes	130.00	130.00	130.00	130.00	130.00	130.00	130.00	130.00	130.00	130.00	130.00	130.00	130.00

CONSUMER PRICE INDICES FOR GROUPS AND SUB - GROUPS

By Month - 1998

Table Eight

Main & Subsidiary Groups	JAN	FEB	MAR	APR	MAY	JUN	JUL	AUG	SEP	OCT	NOV	DEC	AVG.
ALL GROUPS													
FOOD :													
Bread & Cereal	114.80	114.10	114.80	114.80	115.20	114.60	114.60	114.60	114.60	114.60	114.50	115.20	114.70
Fresh Meat	153.10	153.10	153.10	153.10	153.10	153.10	153.10	153.10	153.10	153.10	153.10	153.10	153.10
Preserved Meat	177.90	176.00	176.90	176.90	175.60	175.70	178.40	176.60	181.90	182.60	178.30	177.00	177.82
Frozen Meat	134.90	136.80	138.00	134.90	131.60	136.00	137.00	135.90	135.60	135.60	135.90	135.00	135.60
Fish	218.40	222.10	229.70	230.30	231.50	230.30	231.50	231.50	237.60	237.60	233.50	228.10	230.18
Milk & Dairy Products	140.10	140.10	138.90	141.70	141.70	142.40	141.50	141.50	141.60	141.60	147.90	147.90	142.24
Oils & Fats	121.20	121.20	120.20	119.90	120.20	111.10	112.00	112.20	112.60	122.30	119.10	119.10	117.59
Vegetables	238.80	233.60	229.20	230.00	215.60	227.20	216.20	224.40	219.00	222.00	237.90	250.30	228.68
Fruits	160.20	152.80	183.20	186.40	181.70	199.00	203.60	248.30	179.10	171.90	171.50	182.60	185.03
Tubers	186.00	182.00	154.70	174.90	172.30	201.10	197.10	219.30	210.80	207.50	202.60	195.90	192.02
Sugar	109.00	109.00	109.00	109.00	109.00	109.00	109.00	109.00	109.00	109.00	109.00	109.00	109.00
Coffee & Cocoa	115.70	115.70	115.70	115.70	113.40	113.40	113.40	113.40	113.40	113.40	113.40	113.40	114.17
Other Foods	115.90	120.50	121.30	119.00	119.20	123.00	125.40	125.40	122.60	123.00	123.50	124.90	121.98
BEVERAGE AND TOBACCO :													
Non - Alcoholic Beverages	131.30	131.30	133.00	133.00	133.00	133.00	133.00	133.00	133.00	133.00	133.00	133.00	132.72
Alcoholic Beverages	151.30	151.30	152.90	145.90	148.40	148.40	148.30	148.30	148.30	148.30	148.30	148.30	149.00
Tobacco	144.50	144.50	144.50	144.50	144.50	144.50	144.50	139.00	139.00	141.60	141.60	141.60	142.86
CLOTHING AND FOOTWEAR :													
Clothing	243.70	243.70	243.70	243.70	243.70	237.40	237.10	237.10	237.10	237.10	237.10	237.10	239.88
Footwear	136.30	136.30	136.30	136.30	136.30	141.90	141.90	141.90	141.90	141.90	141.90	141.90	139.57
HOUSING :													
Rent & Repairs	103.30	103.30	103.30	103.30	103.30	103.30	103.30	103.30	103.30	103.30	103.30	103.30	103.30
Water Charges	303.30	303.30	303.30	303.30	303.30	303.30	303.30	303.30	303.30	303.30	303.30	303.30	303.30
FUEL AND LIGHT :													
Electricity	99.50	98.00	97.50	100.00	96.40	97.30	91.40	92.60	91.20	91.90	92.30	91.40	94.96
Gas	118.60	118.60	118.60	118.60	118.60	118.60	118.60	118.60	118.60	118.60	118.60	118.60	118.60
Other Fuels	182.90	182.90	182.90	182.90	182.90	182.90	181.60	181.60	181.60	181.60	181.60	181.60	182.25
FURNITURE, FURNISHINGS, HOUSEHOLD EQUIPMENT AND OPERATIONS :													
Furniture & Fixtures	162.50	162.50	162.50	162.50	162.50	162.50	162.50	162.50	162.50	162.50	162.50	162.50	162.50
Durables	157.60	154.30	154.30	154.30	154.30	154.30	154.30	154.30	154.30	171.90	171.90	171.90	158.98
Household Operations	133.90	133.90	133.90	135.30	135.30	135.10	137.70	137.70	137.70	137.70	138.10	138.10	136.20
Domestic Services	318.20	318.20	318.20	318.20	318.20	318.20	318.20	318.20	318.20	318.20	318.20	318.20	318.20
MEDICAL CARE AND HEALTH EXPENSES :													
Medical Products	161.20	161.20	161.20	160.80	160.80	160.80	158.90	160.50	160.90	160.90	161.00	161.00	160.77
Services Of Physicians , etc.	272.20	272.20	272.20	272.20	272.20	272.20	272.20	272.20	312.00	312.00	312.00	312.00	285.47
TRANSPORT AND COMMUNICATIONS :													
Personal Transport	191.90	192.40	192.40	192.40	192.40	193.80	194.10	194.10	194.10	194.10	194.10	194.10	193.33
Purchased Transport	140.70	140.60	140.60	143.20	145.90	143.80	144.70	144.80	144.90	148.40	146.70	142.80	143.93
Communications	105.70	105.70	105.70	105.70	105.70	105.70	105.70	105.70	105.70	105.70	105.70	105.70	105.70
RECREATION, ENTERTAINMENT, EDUCATION AND CULTURAL SERVICES :													
Equipment & Accessories	105.00	108.40	108.40	108.40	108.40	108.40	108.40	108.40	108.40	111.00	111.00	111.00	108.77
Entertainment Services	126.60	126.60	126.60	126.60	126.60	126.60	126.60	126.60	126.60	126.60	126.60	126.60	126.60
Books, Newspapers & Magazines	196.70	196.70	196.70	196.70	196.70	196.70	201.80	209.00	209.50	209.50	209.50	209.50	202.42
Education	341.00	341.00	341.00	341.00	341.00	341.00	341.00	341.00	341.00	341.00	341.00	341.00	341.00
MISCELLANEOUS GOODS AND SERVICES :													
Hair Care	130.90	130.90	130.90	130.90	130.90	130.90	130.90	130.90	136.10	136.10	136.10	136.10	132.63
Personal Care	139.90	140.10	140.10	139.90	139.90	139.90	139.90	140.90	140.90	140.90	143.90	143.90	140.85
Other Personal Goods	215.20	215.20	215.20	215.20	215.20	215.20	215.20	215.20	215.20	215.20	215.20	215.20	215.20
Writing & Drawing Equipment & Supplies	121.70	121.70	121.70	121.70	121.70	121.70	121.70	121.70	121.70	121.70	121.70	121.70	121.70
Restaurants & Cafes	130.00	130.00	130.00	130.00	130.00	130.00	130.00	130.00	130.00	130.00	132.30	132.30	130.38

CONSUMER PRICE INDEX

by Monthly, 1992 - 1998

Table Nine

GROUPS		WEIGHTS	YEAR	JAN	FEB	MAR	APR	MAY	JUN	JUL	AUG	SEP	OCT	NOV	DEC
ALL GROUPS	1,000.00	1992	135.40	136.40	135.70	136.70	137.20	137.40	138.20	136.40	138.00	137.40	137.90	137.80	
		1993	138.80	140.40	139.00	136.90	136.80	138.10	139.10	138.10	136.10	137.20	138.10	138.70	
		1994	139.20	139.30	137.30	138.50	139.40	141.40	142.80	143.20	142.90	143.50	146.80	146.90	
		1995	149.00	150.50	148.70	149.50	149.60	149.50	151.10	150.00	151.70	148.40	148.90	153.70	
		1996	153.10	152.80	152.30	153.40	152.90	153.70	151.20	151.70	149.10	148.00	149.20	150.20	
		1997	150.40	150.00	149.60	150.00	150.20	152.50	154.20	152.90	151.80	151.40	152.40	152.60	
		1998	154.40	153.80	154.80	155.40	154.00	156.10	155.60	158.70	155.50	155.90	157.10	158.10	
		FOOD	467.51	1992	142.90	144.50	142.40	143.90	144.90	145.30	146.00	141.60	145.20	143.80	144.20
1993	144.90			148.20	145.00	140.40	140.10	143.00	145.10	142.90	138.90	141.40	143.10	144.40	
1994	146.60			146.90	142.30	145.30	146.50	149.60	151.60	152.00	151.40	151.80	158.70	158.50	
1995	162.40			163.10	158.70	160.70	160.60	160.30	163.70	161.20	164.70	157.10	157.90	167.80	
1996	166.60			166.00	163.90	166.20	164.20	165.70	160.40	161.20	154.80	151.90	154.00	155.70	
1997	155.40			154.30	153.40	154.30	155.30	159.40	163.20	159.70	157.00	155.40	156.80	156.70	
1998	160.80			159.50	161.60	162.80	159.60	164.50	163.50	170.00	162.40	162.50	164.80	167.10	
BEVERAGE AND TOBACCO	28.17			1992	129.90	129.90	129.90	130.30	130.30	130.50	130.50	130.50	130.50	130.40	130.90
		1993	131.50	134.30	135.30	135.30	134.60	134.60	134.70	134.80	134.80	134.90	134.50	134.50	
		1994	134.60	134.90	134.90	134.90	135.50	136.30	135.30	136.00	135.30	135.80	138.50	138.50	
		1995	138.50	138.50	138.50	138.50	138.50	138.50	139.10	139.10	139.10	141.80	141.90	141.90	
		1996	141.90	142.10	141.40	141.40	141.10	141.10	141.60	141.60	141.80	141.80	141.80	141.80	
		1997	141.80	141.80	141.80	141.80	141.40	141.40	141.30	141.70	141.80	142.60	142.60	142.80	
		1998	142.80	142.80	143.80	141.50	142.30	142.30	142.30	140.20	140.20	141.20	141.20	141.20	
		CLOTHING AND FOOTWEAR	64.97	1992	171.30	171.30	174.70	177.50	177.50	177.50	181.50	181.50	181.50	181.50	181.50
1993	180.30			181.10	181.10	181.10	181.10	181.10	181.40	181.40	181.40	181.40	184.90	184.70	
1994	176.80			172.70	172.70	172.70	172.70	177.30	179.70	182.40	182.40	182.40	182.40	184.30	
1995	187.50			187.70	188.50	188.50	188.50	188.50	188.60	188.80	188.80	189.90	189.90	189.90	
1996	189.90			189.90	189.90	189.90	196.20	193.00	193.00	192.90	193.60	196.20	196.20	196.20	
1997	203.80			205.50	204.70	204.30	197.30	201.30	198.70	199.40	202.90	202.90	206.20	208.60	
1998	209.70			209.70	209.70	209.70	209.70	207.30	207.10	207.10	207.10	207.10	207.10	207.10	
HOUSING	135.34			1992	105.10	105.10	105.10	105.10	105.10	105.00	104.90	105.00	105.00	105.00	105.00
		1993	105.00	105.00	105.10	105.00	105.00	105.00	105.00	105.00	105.00	105.00	105.10	105.10	
		1994	105.10	105.10	104.90	104.90	104.80	104.70	104.70	104.70	104.70	104.70	104.70	104.80	
		1995	104.80	112.40	112.40	112.40	112.40	112.40	112.50	112.50	112.50	112.50	112.50	112.50	
		1996	112.50	112.50	112.50	112.50	112.50	112.50	112.40	112.50	112.30	112.40	112.40	112.40	
		1997	112.40	112.40	112.40	112.40	112.30	112.30	112.30	112.30	112.40	112.50	112.50	112.60	
		1998	112.60	112.60	112.60	112.60	112.60	112.50	112.50	112.60	112.60	112.60	112.60	112.60	
		FUEL AND LIGHT	44.95	1992	114.70	118.90	118.80	118.50	119.90	119.10	119.60	121.40	120.10	120.70	122.80
1993	119.70			117.40	118.80	120.80	119.90	119.70	118.50	119.00	117.80	118.40	118.30	118.70	
1994	117.00			116.30	117.70	117.70	117.30	117.50	117.40	118.70	118.10	118.10	119.20	118.10	
1995	117.30			117.20	119.30	118.50	118.50	121.00	119.10	119.30	119.30	120.00	121.00	121.40	
1996	121.10			119.80	123.90	126.10	124.60	125.60	123.50	124.70	124.40	126.40	127.40	127.80	
1997	129.40			128.70	127.20	127.20	125.40	126.30	123.90	126.10	125.40	127.30	128.30	127.00	
1998	125.70			125.00	124.70	126.00	124.20	124.60	121.40	122.00	121.20	121.60	121.80	121.40	

(continued)

CONSUMER PRICE INDEX

by Month, 1992 - 1998

Table Nine (continued)

GROUPS	WEIGHTS	MONTHS													
		YEAR	YEAR	FEB	MAR	APR	MAY	JUN	JUL	AUG	SEP	OCT	NOV	DEC	
FURNITURE, FURNISHINGS, HOUSEHOLD EQUIPMENT AND OPERATIONS	57.71	1992	140.70	140.70	141.90	141.90	141.90	141.90	141.90	141.90	141.90	141.90	141.90	141.90	141.90
		1993	144.80	144.10	144.30	141.70	141.80	141.80	141.80	141.90	141.90	141.90	142.30	141.80	
		1994	142.90	143.10	143.20	143.20	143.20	143.20	143.20	143.20	143.30	143.30	143.30	143.50	144.10
		1995	146.10	145.70	146.60	146.60	146.60	145.10	145.60	146.20	146.20	147.20	147.20	147.20	
		1996	147.20	147.00	147.00	146.60	146.40	147.00	149.50	148.60	150.20	150.50	151.40	151.40	
		1997	149.70	150.60	151.20	151.20	153.20	153.20	156.30	157.40	157.40	157.70	158.10	157.90	
		1998	157.90	157.30	157.30	158.00	158.00	157.80	159.10	159.10	159.10	162.70	162.90	162.90	
MEDICAL CARE AND HEALTH EXPENSES	22.78	1992	125.60	125.60	126.40	126.40	126.80	126.80	126.80	126.80	126.50	126.50	126.50	123.70	
		1993	148.00	150.00	148.50	150.20	150.60	151.60	152.00	152.40	152.20	152.10	157.80	157.80	
		1994	158.70	161.00	168.40	160.80	162.50	168.80	175.80	176.00	177.50	178.00	176.00	177.30	
		1995	177.30	177.30	178.30	178.70	179.70	189.00	187.70	188.00	187.30	186.00	186.00	187.00	
		1996	177.30	177.30	178.30	178.70	179.70	189.00	187.70	188.00	187.30	186.00	186.00	187.00	
		1997	187.30	187.30	189.00	188.90	194.00	196.00	196.40	196.40	196.50	195.50	195.70	195.80	
		1998	195.00	195.00	195.00	194.60	194.60	194.60	193.30	194.40	206.80	206.80	206.90	206.90	
TRANSPORT AND COMMUNICATIONS	63.48	1992	136.80	136.80	137.20	138.80	138.80	139.00	139.80	139.80	139.20	139.50	140.60	141.80	
		1993	142.20	143.40	143.10	144.40	144.40	144.40	145.00	145.00	145.00	145.20	145.10	144.30	
		1994	144.30	144.30	144.30	144.30	144.30	145.80	145.80	146.60	146.60	151.60	151.60	151.60	
		1995	154.60	155.00	159.40	159.40	160.10	160.30	160.30	160.50	160.50	160.50	160.30	160.60	
		1996	154.60	155.00	159.40	159.40	160.10	160.30	160.30	160.50	160.50	160.50	160.30	160.60	
		1997	161.50	161.20	161.40	161.40	161.80	161.80	161.70	161.70	161.30	161.30	161.30	162.80	
		1998	162.00	162.20	162.20	163.30	164.40	164.20	164.70	164.80	164.90	166.30	165.60	164.00	
RECREATION, ENTERTAINMENT, EDUCATION AND CULTURAL SERVICES	32.36	1992	143.10	143.50	142.60	142.60	143.60	144.40	148.20	153.30	152.80	151.90	151.90	151.70	
		1993	151.70	152.00	149.30	149.30	149.30	149.30	147.10	149.50	147.00	146.90	149.00	150.80	
		1994	149.20	150.10	150.10	149.40	149.10	149.30	151.40	150.90	151.00	151.00	151.00	151.50	
		1995	157.20	157.20	157.20	157.20	157.50	157.50	157.50	157.60	165.50	165.50	169.10	169.10	
		1996	157.20	157.20	157.20	157.20	157.50	157.50	157.50	157.60	165.50	165.50	169.10	169.10	
		1997	166.60	166.60	166.60	166.60	166.80	166.80	166.80	170.50	171.10	170.90	170.90	170.10	
		1998	170.10	170.70	170.70	170.70	170.70	170.70	172.60	175.20	175.40	175.90	175.90	175.90	
MISCELLANEOUS GOODS AND SERVICES	82.73	1992	122.60	122.60	122.80	122.80	122.80	122.80	122.80	122.80	123.60	123.60	125.20	126.20	
		1993	125.50	124.90	126.70	126.80	127.20	126.70	126.70	126.70	126.20	125.40	120.90	120.70	
		1994	121.10	124.00	123.40	123.20	126.00	126.10	127.40	126.60	126.80	127.40	127.70	127.70	
		1995	130.20	130.20	130.20	130.20	130.30	130.30	130.30	131.00	132.20	131.80	131.80	133.20	
		1996	130.20	130.20	130.20	130.20	130.30	130.30	130.30	131.00	132.20	131.80	131.80	133.20	
		1997	132.70	132.70	132.70	132.70	132.70	132.90	133.50	133.70	133.70	136.50	137.40	137.40	
		1998	137.40	137.50	137.50	137.40	137.40	137.40	137.40	137.90	138.60	138.60	140.80	140.80	

MONTHLY CONSUMER PRICE INDEX

Monthly Percentage Changes, 1992 - 1998

Table Ten

GROUPS	WEIGHTS	YEAR	MONTHS											
			JAN	FEB	MAR	APR	MAY	JUN	JUL	AUG	SEP	OCT	NOV	DEC
ALL GROUPS	1,000.00	1992	1.35	0.74	(0.51)	0.74	0.37	0.15	0.58	(1.30)	1.17	(0.43)	0.36	(0.07)
		1993	0.73	1.15	(1.00)	(1.51)	(0.07)	0.95	0.72	(0.72)	(1.45)	0.81	0.66	0.43
		1994	0.36	0.07	(1.44)	0.87	0.65	1.43	0.99	0.28	(0.21)	0.42	2.31	0.07
		1995	1.43	1.01	(1.20)	0.54	0.07	(0.07)	1.07	(0.73)	1.13	(2.18)	0.34	3.22
		1996	(0.39)	(0.20)	(0.33)	0.72	(0.33)	0.52	(1.63)	0.33	(1.71)	(0.74)	0.81	0.67
		1997	0.13	(0.27)	(0.27)	0.27	0.13	1.53	1.11	(0.84)	(0.72)	(0.26)	0.66	0.13
		1998	1.20	(0.40)	0.70	0.40	(0.90)	1.40	(0.30)	2.00	(2.00)	0.30	0.80	0.60
		FOOD	467.51	1992	1.85	1.12	(1.45)	1.06	0.42	0.55	0.49	(3.03)	2.56	(0.97)
1993	0.77			2.29	(2.16)	(3.13)	(0.21)	2.08	1.48	(1.52)	(2.80)	1.80	1.21	0.91
1994	1.53			0.21	(3.15)	2.12	0.83	2.13	1.35	0.26	(0.40)	0.27	4.52	(0.13)
1995	2.46			0.43	(2.70)	1.26	(0.06)	(0.19)	2.13	(1.54)	2.18	(4.61)	0.51	6.27
1996	(0.72)			(0.36)	(1.27)	1.40	(1.20)	0.91	(3.20)	0.50	(3.97)	(1.87)	1.38	1.10
1997	(0.19)			(0.71)	(0.58)	0.59	0.65	2.64	2.38	(2.14)	(1.69)	(1.02)	0.90	0.06
1998	2.60			(0.80)	1.30	0.70	(2.00)	3.10	(0.60)	4.00	(4.50)	0.10	1.40	1.40
BEVERAGE AND TOBACCO	28.17			1992	0.00	0.00	0.00	0.31	0.00	0.15	0.00	0.00	0.00	(0.08)
		1993	0.00	2.13	0.74	0.00	(0.52)	0.00	0.07	0.07	0.00	0.07	(0.30)	0.00
		1994	0.07	0.22	0.00	0.00	0.44	0.59	(0.73)	0.52	(0.51)	0.37	1.99	0.00
		1995	0.00	0.00	0.00	0.00	0.00	0.00	0.43	0.00	0.00	1.94	0.07	0.00
		1996	0.00	0.10	(0.50)	0.00	(0.20)	0.00	0.40	0.00	0.10	0.00	0.00	0.00
		1997	0.00	0.00	0.00	0.00	0.28	0.00	0.03	0.28	0.07	0.56	0.00	0.14
		1998	0.00	0.00	0.70	(1.60)	0.60	0.00	0.00	(1.50)	0.00	0.70	0.00	0.00
		CLOTHING AND FOOTWEAR	64.97	1992	7.67	0.00	1.98	1.60	0.00	0.00	2.25	0.00	0.00	0.00
1993	(1.69)			0.44	0.00	0.00	0.00	0.00	0.22	0.00	0.00	0.00	1.93	(0.11)
1994	(4.28)			(2.32)	0.00	0.00	0.00	2.66	1.35	1.50	0.00	0.00	0.00	1.04
1995	1.74			0.11	0.43	0.00	0.00	0.00	0.05	0.11	0.00	0.58	0.00	0.00
1996	0.00			0.00	0.00	0.00	3.30	(1.63)	0.00	(0.10)	0.40	1.30	0.00	0.00
1997	3.87			0.80	(0.39)	(0.20)	(3.43)	2.03	(1.29)	0.03	1.76	0.00	1.63	1.16
1998	0.50			0.00	0.00	0.00	0.00	(1.10)	(0.10)	0.00	0.00	0.00	0.00	0.00
HOUSING	135.34			1992	0.00	0.00	0.00	0.00	0.00	(0.10)	(0.10)	0.10	0.00	0.00
		1993	0.00	0.00	0.10	(0.10)	0.00	0.00	0.00	0.00	0.00	0.00	0.10	0.00
		1994	0.00	0.00	(0.19)	0.00	(0.10)	(0.10)	0.00	0.00	0.00	0.00	0.00	0.10
		1995	0.00	7.25	0.00	0.00	0.00	0.00	0.09	0.00	0.00	0.00	0.00	0.00
		1996	0.00	0.00	0.00	0.00	0.00	0.00	(0.09)	0.09	(0.18)	0.09	0.00	0.00
		1997	0.00	0.00	0.00	0.00	0.09	0.00	0.00	0.00	0.09	0.09	0.00	0.09
		1998	0.00	0.00	0.00	0.00	0.00	0.00	(0.10)	0.00	0.10	0.00	0.00	0.00
		FUEL AND LIGHT	44.95	1992	(0.69)	3.66	(0.08)	(0.25)	1.18	(0.67)	0.42	1.51	(1.07)	0.50
1993	0.25			(1.92)	1.19	1.68	(0.75)	(0.17)	(1.00)	0.42	(1.01)	0.51	(0.08)	0.34
1994	(1.43)			(0.60)	1.20	0.00	(0.34)	0.17	(0.09)	1.11	(0.51)	0.00	0.93	(0.92)
1995	(0.68)			(0.09)	1.79	(0.67)	0.00	2.11	(1.57)	0.17	0.00	0.59	0.83	0.00
1996	0.10			(1.10)	3.40	1.80	(1.20)	0.80	(1.70)	1.00	(0.20)	1.60	0.80	0.30
1997	1.25			(0.54)	(1.17)	0.00	(1.42)	0.72	(1.90)	1.78	(0.56)	1.52	0.79	(1.01)
1998	(1.00)			(0.60)	(0.20)	1.00	(1.40)	0.30	(2.60)	0.50	(0.70)	0.30	0.20	(0.30)

(continued)

MONTHLY CONSUMER PRICE INDEX

Monthly Percentage Changes, 1992 - 1998

Table Ten (continued)

GROUPS	WEIGHTS	YEAR	MONTHS												
			JAN	FEB	MAR	APR	MAY	JUN	JUL	AUG	SEP	OCT	NOV	DEC	
FURNITURE,FURNISHINGS,HOUSEHOLD EQUIPMENT AND OPERATIONS	57.71	1992	0.00	0.00	0.85	0.00	0.00	0.00	0.00	0.00	0.00	0.00	0.00	0.00	0.00
		1993	1.48	0.07	0.14	(1.80)	0.07	0.00	0.00	0.07	0.00	0.00	0.28	(0.35)	
		1994	0.78	0.14	0.14	(0.07)	0.00	0.00	0.00	0.07	0.00	0.00	0.14	0.42	
		1995	1.39	(0.27)	0.62	0.00	0.00	(1.02)	0.34	0.41	0.00	0.68	0.00	0.00	
		1996	0.00	(0.10)	0.00	(0.30)	(0.10)	0.40	0.00	1.10	1.10	0.20	0.60	0.00	
		1997	(1.12)	0.60	0.40	0.00	1.32	0.00	2.02	0.70	0.00	0.19	0.25	(0.13)	
		1998	0.00	(0.40)	0.00	0.40	0.00	(0.10)	0.80	0.00	0.00	2.30	0.10	0.00	
MEDICAL CARE AND HEALTH EXPENSES	22.78	1992	(1.48)	(0.79)	0.64	0.00	0.32	0.00	0.00	0.00	(0.24)	0.00	0.00	(2.21)	
		1993	19.64	1.35	(1.00)	1.14	0.27	0.66	0.26	0.26	(0.13)	(0.07)	3.75	0.00	
		1994	0.57	1.45	4.60	(4.51)	1.06	3.88	4.15	0.11	0.85	0.28	(1.12)	0.74	
		1995	0.17	0.56	(0.06)	(0.50)	0.17	(0.22)	0.34	(0.28)	(0.17)	0.11	(0.39)	0.96	
		1996	(0.70)	0.00	0.60	0.20	0.60	5.20	(0.70)	0.20	(0.40)	(0.70)	0.00	0.50	
		1997	0.17	0.00	0.91	(0.05)	2.70	1.04	0.21	0.00	(0.06)	(0.50)	0.11	0.06	
		1998	(0.40)	0.00	0.00	(0.20)	0.00	0.00	(0.70)	0.60	6.40	0.00	0.00	0.00	
TRANSPORT AND COMMUNICATIONS	63.48	1992	0.00	0.00	0.29	1.17	0.00	0.14	0.58	0.00	(0.43)	0.22	0.79	0.85	
		1993	0.28	0.84	(0.21)	0.91	0.00	0.00	0.42	0.00	0.00	0.14	(0.07)	(0.14)	
		1994	0.00	0.00	0.00	0.00	0.00	1.04	0.00	0.55	0.00	3.41	0.00	0.00	
		1995	0.00	1.06	0.26	0.07	0.00	0.00	0.00	0.00	0.00	0.00	0.00	0.72	
		1996	(0.10)	0.30	2.80	0.00	0.40	0.10	0.00	0.10	0.00	0.00	(0.10)	0.20	
		1997	0.57	(6.80)	0.13	0.00	0.25	0.00	(0.74)	0.00	(0.24)	0.00	0.00	0.93	
		1998	(0.50)	0.10	0.00	0.70	0.70	(0.10)	0.30	0.10	0.10	0.80	(0.40)	(1.00)	
RECREATION,ENTERTAINMENT,EDUCATION AND CULTURAL SERVICES	32.36	1992	0.21	0.28	(0.63)	0.00	0.70	0.56	2.63	3.44	(0.33)	(0.59)	0.00	(0.13)	
		1993	0.00	0.20	(1.78)	0.00	0.00	0.00	(1.47)	(0.14)	0.07	(0.07)	1.43	1.21	
		1994	(1.06)	0.60	0.00	(0.47)	(0.20)	0.13	1.41	(0.33)	0.07	0.00	0.00	0.33	
		1995	(0.13)	(0.33)	0.00	0.00	2.92	0.39	0.00	1.09	0.00	(0.19)	0.00	0.00	
		1996	0.00	0.00	0.00	0.00	0.20	0.00	0.00	0.10	5.00	0.00	2.20	0.00	
		1997	(1.47)	0.00	0.00	0.00	0.13	0.00	0.00	2.22	0.36	(0.11)	0.00	(0.46)	
		1998	0.00	0.40	0.00	0.00	0.00	0.00	1.10	1.50	0.10	0.30	0.00	0.00	
MISCELLANEOUS GOODS AND SERVICES	82.73	1992	(0.81)	0.00	0.16	0.00	0.00	0.00	0.00	0.00	0.65	0.00	1.29	0.80	
		1993	(0.55)	(0.48)	1.44	0.08	0.32	(0.39)	0.00	0.00	(0.39)	(0.63)	(3.59)	(0.17)	
		1994	0.33	2.39	(0.48)	(0.16)	2.27	0.08	1.03	(0.63)	0.16	0.47	0.24	0.00	
		1995	0.00	0.00	0.23	(0.31)	0.00	0.00	0.00	0.00	0.47	0.47	0.23	0.46	
		1996	0.00	0.00	0.00	0.00	0.00	0.00	0.00	0.50	0.90	0.20	0.00	1.10	
		1997	0.38	0.00	0.00	0.00	0.00	0.16	0.46	0.15	0.00	2.10	0.66	0.00	
		1998	0.00	0.10	0.00	(0.10)	0.00	0.00	0.00	0.40	0.50	0.00	1.60	0.00	

AVERAGE PRICE OF SELECTED COMMODITIES

April 1984 - April 1998

Table Eleven

ITEM	Apr. 1984	Apr. 1985	Apr. 1986	Apr. 1987	Apr. 1988	Apr. 1989	Apr. 1990	Apr. 1991	Apr. 1992	Apr. 1993	Apr. 1994	Apr. 1995	Apr. 1996	Apr. 1997	Apr. 1998
FOOD :															
Sandwich Loaf	2.60	2.60	2.60	2.60	2.60	2.60	2.80	2.80	2.80	2.80	2.80	2.80	2.80	2.80	2.80
Flour	0.75	0.75	0.75	0.75	0.75	0.75	0.80	0.80	0.80	0.80	0.80	0.80	0.80	0.80	0.83
Rice	0.85	0.85	0.80	0.90	0.80	0.80	0.80	1.00	0.90	0.80	0.80	1.10	1.10	1.10	1.10
Cornflakes	5.00	5.08	5.98	5.45	6.28	6.88	7.69	7.39	7.43	9.07	10.49	12.18	10.48	11.17	10.57
Corned Beef	3.35	3.48	3.27	3.83	3.73	3.51	4.00	4.63	5.02	3.23	3.64	3.98	4.52	4.34	4.14
Beef (Frozen)	2.29	2.75	2.76	2.71	3.63	3.55	4.43	4.50	4.36	4.64	4.66	5.02	5.18	4.93	4.99
Chicken Legs	2.97	2.74	2.26	2.28	2.28	2.57	2.73	3.05	2.90	2.56	2.88	3.17	3.14	3.10	3.02
Chicken Wings	2.57	2.56	2.33	1.82	1.77	1.72	2.30	2.36	2.30	2.29	2.51	2.66	3.12	3.16	2.94
Turkey Wings	1.69	1.81	1.87	1.46	1.16	1.78	1.85	1.84	1.90	1.95	1.97	2.22	2.12	2.44	2.34
Saltfish	4.14	3.28	4.37	7.74	6.57	5.89	7.00	8.94	11.01	8.33	8.38	9.54	9.51	9.98	9.51
Evaporated Milk	1.36	1.23	1.31	1.36	1.38	1.51	1.60	1.64	1.64	1.54	1.56	1.56	1.96	2.12	1.88
Cheese	3.37	3.27	3.18	3.36	4.83	4.97	5.40	4.74	5.40	5.01	5.08	5.29	5.72	5.95	5.93
Eggs	4.98	4.33	5.38	5.13	5.00	5.38	5.75	6.18	6.30	5.75	6.00	6.25	6.25	6.73	6.58
Table Better	2.13	1.89	1.74	1.83	1.82	2.39	2.51	2.67	2.61	2.14	2.36	2.40	3.57	3.07	2.74
Cucumbers	1.00	1.25	1.13	1.25	1.28	0.70	1.40	1.28	0.88	0.75	1.28	1.30	2.41	1.27	1.26
Pumpkins	0.85	0.78	0.88	1.57	0.95	1.02	1.08	1.12	0.97	1.67	1.75	1.20	1.41	1.98	1.56
Oranges	1.00	0.75	0.70	1.30	1.13	1.25	0.88	1.00	2.70	1.52	1.08	1.68	1.18	1.08	0.97
Grapefruits	0.58	0.45	0.45	0.88	0.73	0.63	0.40	0.75	1.75	0.41	0.62	0.44	0.68	0.38	0.39
Irish Potatoes	0.82	0.45	0.52	0.72	0.82	0.72	0.93	1.11	1.00	0.78	0.82	1.20	1.10	0.75	0.87
Sugar (Brown)	0.70	0.70	0.60	0.60	0.60	0.60	0.70	0.75	0.75	0.75	0.75	0.75	0.75	0.75	0.75
Sugar (White)	0.90	0.90	0.80	0.80	0.80	0.80	1.00	1.10	1.10	1.10	1.10	1.10	1.10	1.10	1.10
Onions	1.34	0.67	0.59	0.80	0.78	0.75	0.98	0.94	0.96	0.88	0.91	1.42	0.83	0.73	1.17
Malta	1.80	1.80	1.80	1.80	1.80	1.98	2.00	2.03	2.15	2.15	2.15	2.18	2.18	2.10	2.20
ALCOHOLIC BEVERAGES & TOBACCO															
Rum	12.50	13.31	13.67	13.53	14.40	15.45	16.53	17.98	18.90	20.45	19.82	19.82	19.50	19.82	17.84
Whiskey	24.60	23.26	24.56	25.36	28.11	28.11	31.99	34.93	35.43	35.93	37.48	37.48	38.72	38.22	37.75
HOUSING :															
Water	2.25	2.25	3.60	3.60	3.60	3.60	3.85	4.10	4.10	4.10	4.10	4.10	9.10	9.10	9.10
Telephone	48.50	48.50	48.50	49.25	51.25	51.25	51.25	51.25	51.25	51.25	51.25	51.25	51.25	51.25	51.25
Cement	11.88	12.25	12.25	12.25	12.88	13.00	13.21	13.21	13.21	13.80	13.80	13.80	13.80	13.80	13.80
FUEL AND LIGHT :															
Electricity	35.36	35.28	32.48	27.76	28.72	30.86	30.32	30.72	30.08	31.68	29.44	30.08	35.44	37.28	35.36
Gas	115.55	123.91	123.91	105.51	105.51	117.69	118.00	147.00	137.00	137.00	137.00	137.00	137.00	137.00	137.00
Kerosene	4.25	4.39	4.25	3.75	3.75	4.00	4.49	5.65	5.00	5.00	5.00	5.00	5.00	5.00	5.00
TRANSPORT AND COMMUNICATIONS :															
Petrol	5.00	5.00	5.00	5.00	5.00	5.00	5.00	6.00	6.00	6.10	6.10	6.10	6.10	6.10	6.10
Bus Fare	6.00	6.00	6.00	6.00	6.00	6.00	6.00	7.00	7.00	7.00	7.00	7.00	8.00	8.00	8.00

BASE YEAR AVERAGE EXPENDITURE

For All Major Groups

Table Twelve

GROUPS	EXPENDITURE \$
FOOD	698.19
BEVERAGE AND TOBACCO	31.13
CLOTHING AND FOOTWEAR	90.91
HOUSING	200.37
FUEL AND LIGHT	72.22
FURNITURE, FURNISHINGS, HOUSEHOLD, EQUIPMENT AND OPERATIONS	80.30
MEDICAL CARE AND HEALTH EXPENSES	31.24
TRANSPORT AND COMMUNICATIONS	106.82
RECREATION, ENTERTAINMENT, EDUCATION AND CULTURAL SERVICES	43.19
MISCELLANEOUS GOODS AND SERVICES	95.54
TOTAL	1,449.91

MOVEMENTS OF NUTRIENTS - COST OF ECONOMICAL DIETS

(2400 Calories) January to December 1995 - 1998

Table Thirteen

MONTHS	1995		1996		1997		1998	
	Average Daily Cost	Average Monthly Cost	Average Daily Cost	Average Monthly Cost	Average Daily Cost	Average Monthly Cost	Average Daily Cost	Average Monthly Cost
JANUARY	4.58	142.00	4.36	135.20	3.88	120.28	4.23	131.13
FEBRUARY	3.90	109.20	4.18	121.22	4.35	121.80	3.98	111.44
MARCH	3.76	116.60	4.44	137.60	4.22	130.82	3.94	122.14
APRIL	3.87	116.10	4.67	140.10	4.20	126.00	4.30	129.00
MAY	3.85	119.40	4.00	124.00	3.87	119.97	3.81	118.11
JUNE	4.10	123.00	4.05	121.50	4.06	121.80	4.02	120.60
JULY	3.83	118.70	3.68	114.10	3.89	120.59	3.94	122.14
AUGUST	3.93	121.80	3.64	112.80	3.93	121.83	3.80	117.80
SEPTEMBER	4.07	122.10	3.94	118.20	3.92	117.60	3.77	113.10
OCTOBER	3.59	111.30	3.99	123.70	3.95	122.45	4.63	143.53
NOVEMBER	3.71	111.30	3.80	114.00	4.25	127.50	3.71	111.30
DECEMBER	3.89	120.60	3.80	117.80	4.14	128.34	4.61	142.91

ALL ITEM OLD SERIES PRICE INDICES

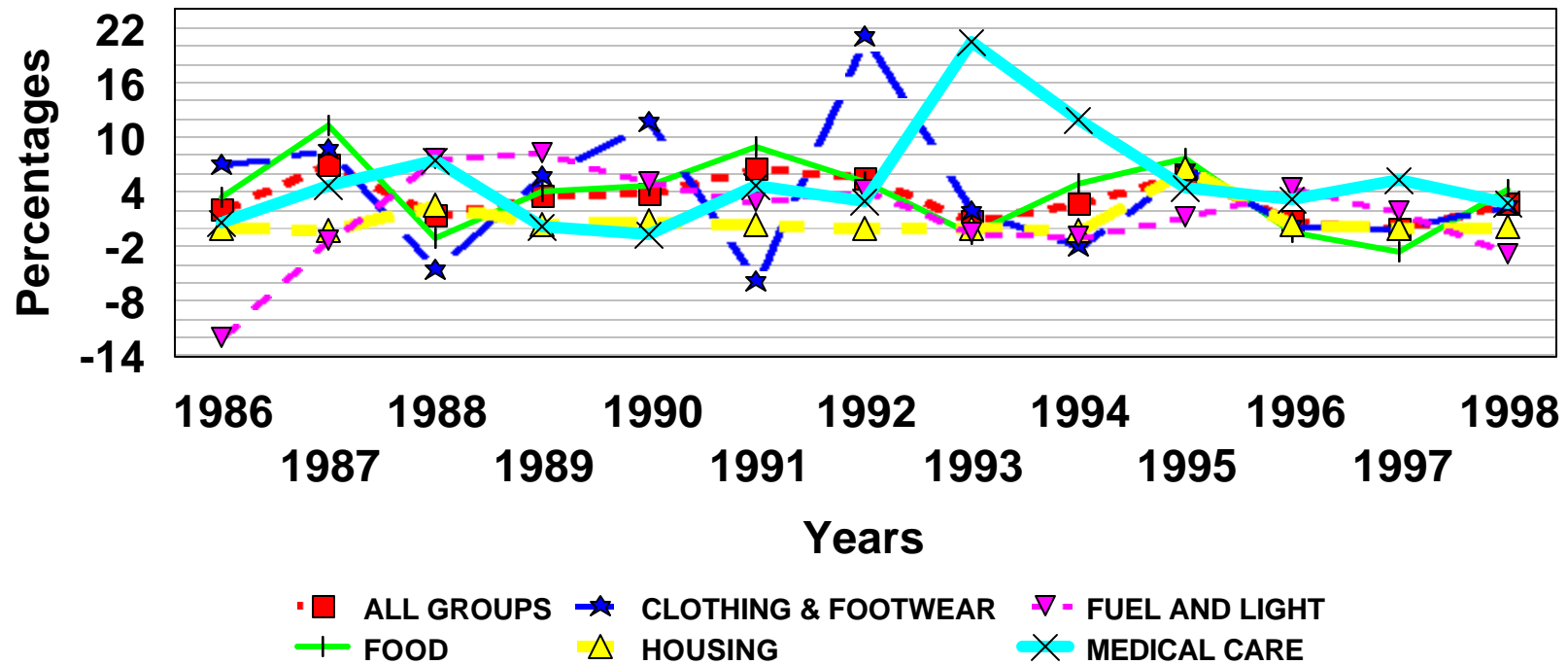
April 1964 = 100

1964 -1985

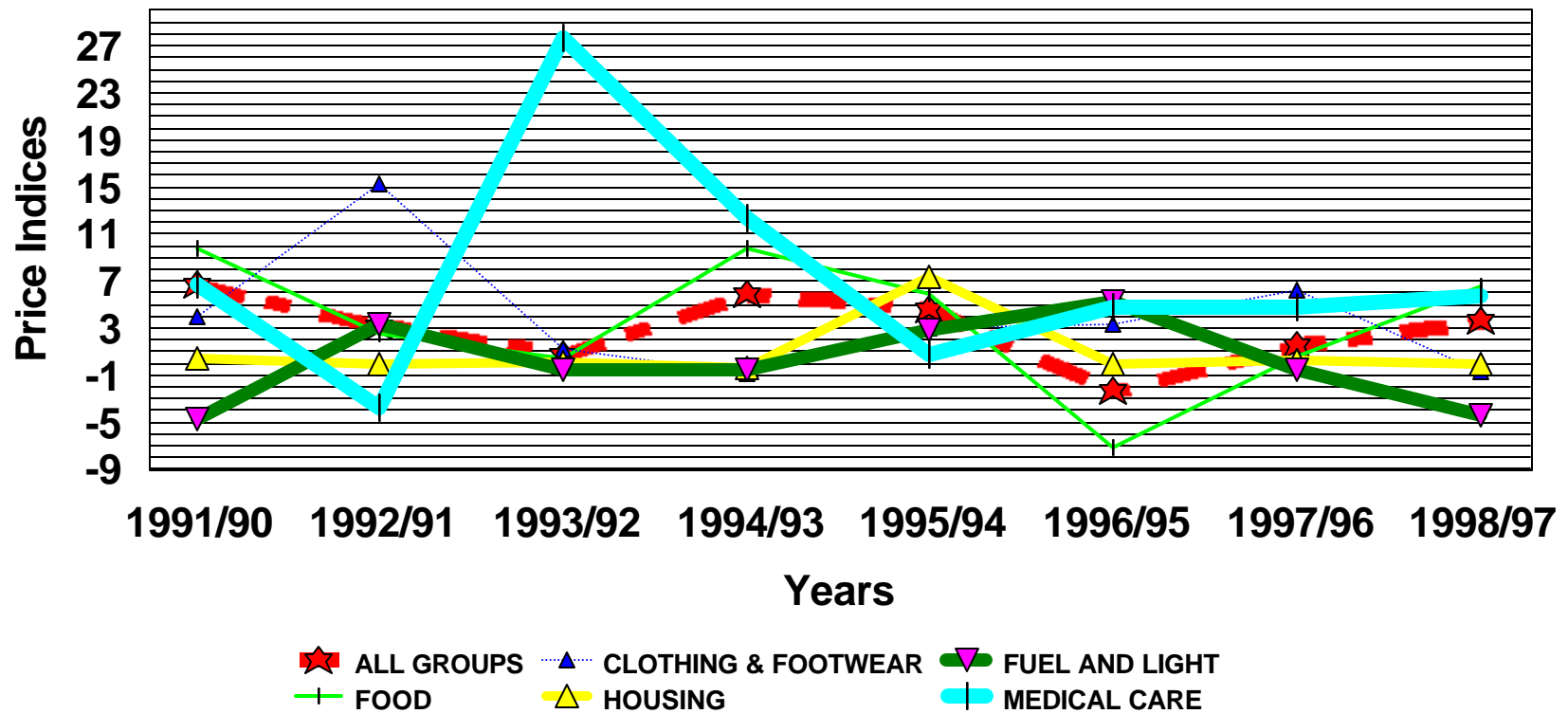
Table Fourteen

YEAR	JAN	FEB	MAR	APR	MAY	JUN	JUL	AUG	SEP	OCT	NOV	DEC	Mean Annual	Mean Annual	Point to Point
													Index	Inflation Rate	(Dec. to Dec)
1964				100.00	100.00	100.50	100.40	100.10	101.60	101.90	101.80	101.80			
1965	102.80	103.00	102.20	102.70	102.50	103.40	105.40	105.60	105.80	105.90	105.80	105.40	104.20		3.50
1966	105.80	105.70	105.30	105.70	106.10	106.10	107.20	105.90	107.60	107.60	108.40	110.10	106.80	2.50	4.50
1967	109.60	110.00	109.80	110.10	109.30	109.90	109.50	110.10	111.00	110.70	111.10	111.50	110.20	3.20	1.30
1968	111.80	112.30	113.60	113.80	115.00	114.70	115.40	116.40	115.80	115.10	115.60	115.60	114.60	4.00	3.70
1969	115.40	116.00	116.10	116.40	115.80	116.20	116.50	116.40	116.40	118.30	118.60	124.20	117.20	2.30	7.40
1970	128.30	129.80	129.80	129.90	130.70	132.50	133.30	135.00	135.00	136.50	136.60	137.10	132.90	13.40	10.40
1971	138.30	138.50	138.30	142.00	142.30	143.30	146.60	146.60	146.90	147.70	148.90	148.00	144.00	8.30	8.00
1972	149.20	149.90	151.50	151.90	152.40	152.00	157.30	157.70	159.80	159.50	161.20	162.10	155.40	7.90	9.50
1973	163.20	164.80	165.30	167.90	168.70	170.90	173.90	176.10	179.00	189.80	193.80	201.70	176.20	13.40	24.40
1974	213.30	218.30	223.30	227.60	231.40	235.50	240.10	246.00	248.30	250.40	251.50	253.20	236.60	34.20	25.50
1975	261.90	263.50	265.40	266.00	280.00	281.50	282.70	286.70	287.00	288.80	289.90	290.10	278.60	17.80	14.60
1976	292.70	292.70	293.40	297.30	300.30	300.90	307.60	313.70	314.70	314.90	317.60	320.00	305.50	9.60	10.30
1977	321.80	323.20	327.10	331.10	327.60	329.60	331.00	331.10	337.90	339.10	343.30	348.00	332.60	8.90	8.80
1978	354.00	362.40	361.60	362.30	364.40	365.30	370.80	374.00	376.10	377.80	377.60	378.00	368.70	10.90	8.60
1979	383.20	384.60	386.80	388.70	390.20	396.20	403.50	410.70	412.50	420.40	427.90	436.20	403.50	9.40	15.40
1980	440.50	449.00	459.20	464.80	467.90	473.40	481.20	487.60	497.80	515.80	519.80	528.40	482.10	19.50	21.10
1981	530.10	537.20	545.70	547.80	549.00	554.70	556.40	558.60	561.60	568.80	569.60	578.40	554.80	15.10	9.50
1982	578.60	580.80	581.50	583.10	583.30	577.30	579.00	579.50	579.00	580.90	580.50	581.60	580.40	4.60	0.60
1983	583.20	587.50	588.50	589.80	590.30	587.70	589.00	591.00	591.50	591.00	588.90	589.30	589.00	1.50	1.30
1984	592.30	591.40	592.20	593.80	596.40	598.50	600.20	598.70	596.30	597.80	598.80	596.50	596.10	1.20	1.20
1985	596.70	597.80	602.70	601.70	600.30	602.40	606.70	608.60							

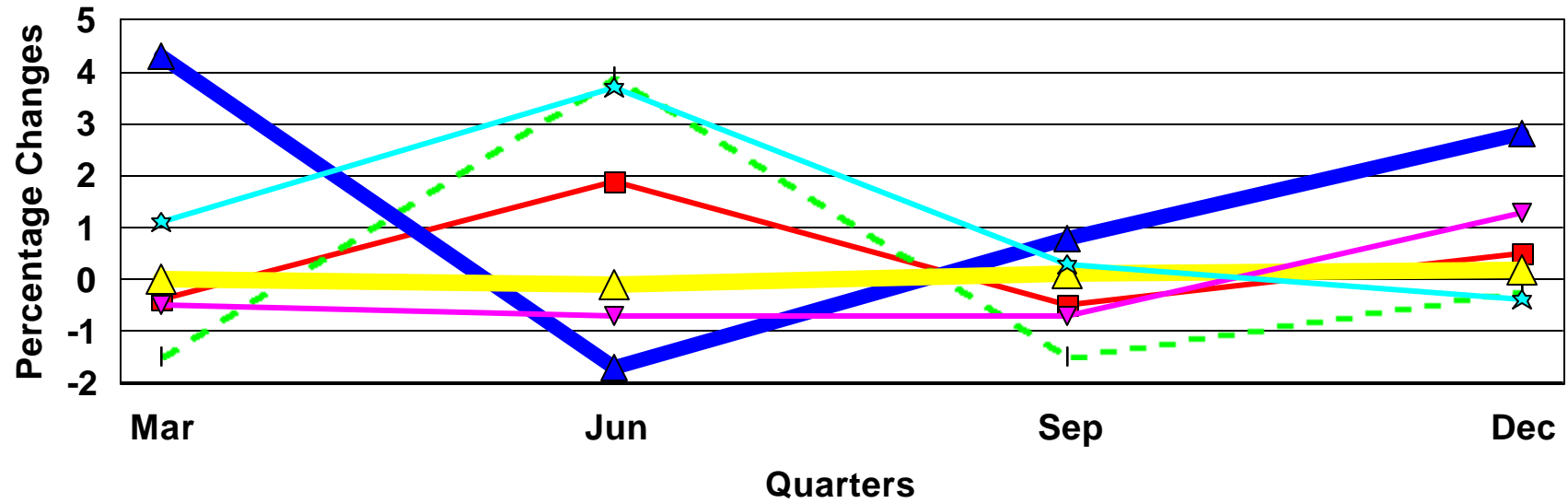
Mean Annual Percentage Change by Main Groups



Point to Point (December to December) Indices by Main Groups



Quarterly Percentage (%) Change 1997



■ ALL GROUPS ▲ CLOTHING & FOOTWEAR ▼ FUEL AND LIGHT
- - FOOD ▲ HOUSING ★ MEDICAL CARE

CPI:Semi Annual Percentage (%) Change Percentage Movements for 6 Months

