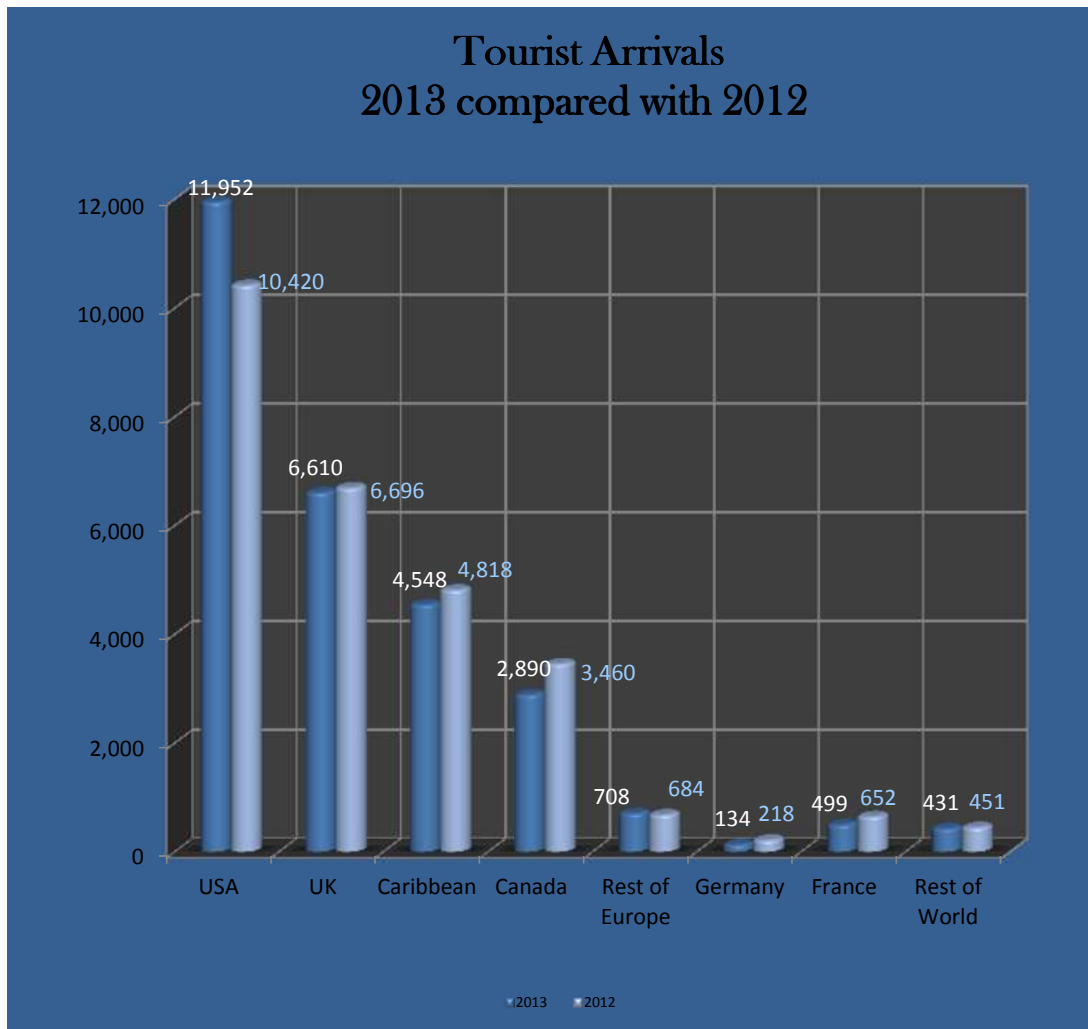


SAINT LUCIA

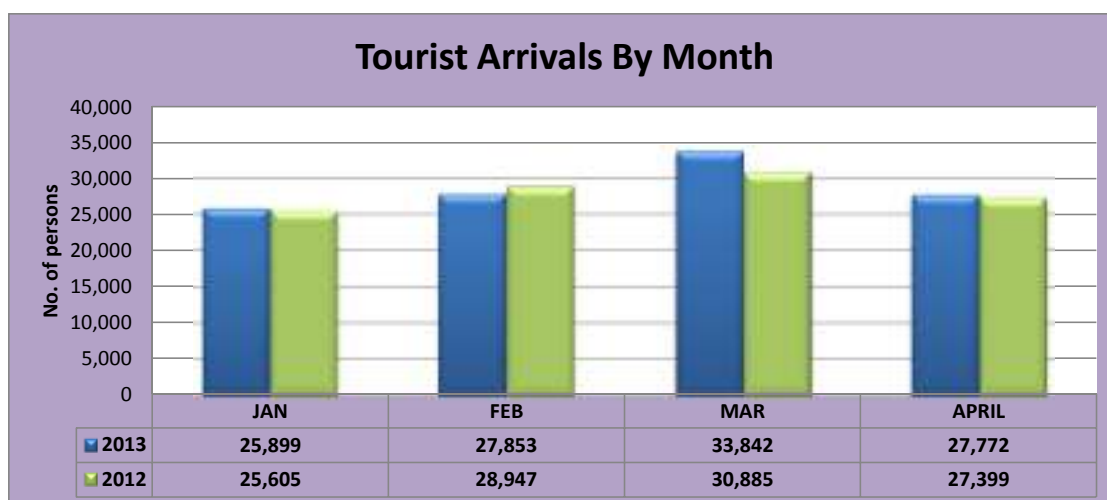
TOURIST ARRIVALS (APRIL-2013)



Source: Saint Lucia Tourist Board

TOURIST ARRIVALS BY MONTHS

MONTH	2013	2012	ACT. CHG.	% CHANGE
JAN	25,899	25,605	294	1.1%
FEB	27,853	28,947	(1,094)	-3.8%
MAR	33,842	30,885	2,957	9.6%
APRIL	27,772	27,399	373	1.4%
TOTAL	115,366	112,836	2,530	2.2%



TOURIST ARRIVALS BY MARKET, APRIL 2013/2012

Markets	2013	2012	ACT.CHG.	% CHANGE
USA	11,952	10,420	1,532	14.7%
UK	6,610	6,696	(86)	-1%
Caribbean	4,548	4,818	-270	-6%
Canada	2,890	3,460	(570)	-16%
Rest of Europe	708	684	24	4%
Germany	134	218	(84)	-39%
France	499	652	-153	-23%
Rest of World	431	451	(20)	-4%
Total	27,772	27,399	373	1.4%

Notes:

1. Rest of Europe includes among others, Holland, Italy, Austria, Belgium, Denmark, Greece, Ireland, Luxembourg, Norway, Portugal, Spain, Sweden, Switzerland
2. Primary data is obtained from the international ED Cards
3. Figures are inclusive of arrivals by Ferry

TOURIST ARRIVALS VIA FERRY BY MONTH

MONTH	2013	2012	ACT. CHG.	% CHANGE
JAN	414	652	(238)	-36.5%
FEB	844	614	230	37.5%
MAR	1,322	696	626	89.9%
APRIL	687	1,205	(518)	-43.0%
TOTAL	3,267	3,167	100	3.2%

Tourist Arrivals via Ferry, January -April 2013/2012

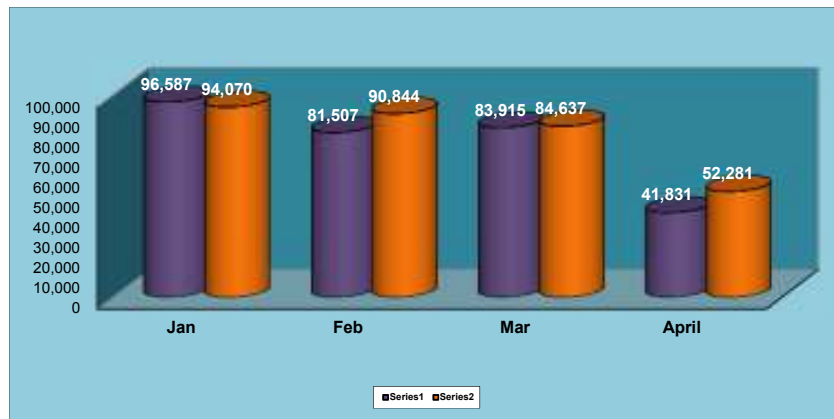
Markets	2013	2012	ACT.CHG.	% CHANGE
USA	24	40	(16)	-40.0%
UK	19	110	(91)	-82.7%
Caribbean	3,020	2,595	425	16.4%
Canada	27	37	(10)	-27.0%
Rest of Europe	69	97	(28)	-28.9%
Germany	34	103	(69)	-67.0%
France	67	148	(81)	-54.7%
Rest of World	7	37	(13)	-100.0%
Total	3,267	3,167	100	3.2%

Note:

Figures represent arrivals by Ferry *only*.

CRUISE PASSENGER ARRIVALS

MONTHS	2013	2012	ACT. CHG.	% CHANGE
Jan	96,587	94,070	2,517	3%
Feb	81,507	90,844	(9,337)	-10%
Mar	83,915	84,637	(722)	-1%
April	41,831	52,281	(10,450)	-20%
TOTAL	303,840	321,832	(17,992)	-5.6%



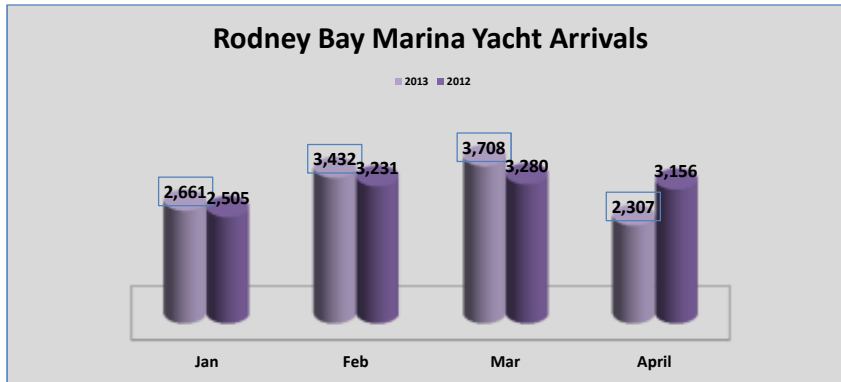
CRUISE SHIP CALLS

MONTHS	2013	2012	ACT.CHG.	%CHANGE
Jan	61	65	-4	-6%
Feb	58	52	6	12%
Mar	58	55	3	5%
April	22	26	-4	-15%
TOTAL	199	198	1	0.5%

Source: SLASPA

RODNEY BAY MARINA YACHT ARRIVALS

Months	2013	2012	ACT. CHG.	% CHANGE
Jan	2,661	2,505	156	6.2%
Feb	3,432	3,231	201	6.2%
Mar	3,708	3,280	428	13.0%
April	2,307	3,156	(849)	-26.9%
TOTAL	12,108	12,172	(64)	-0.5%



Yacht Calls

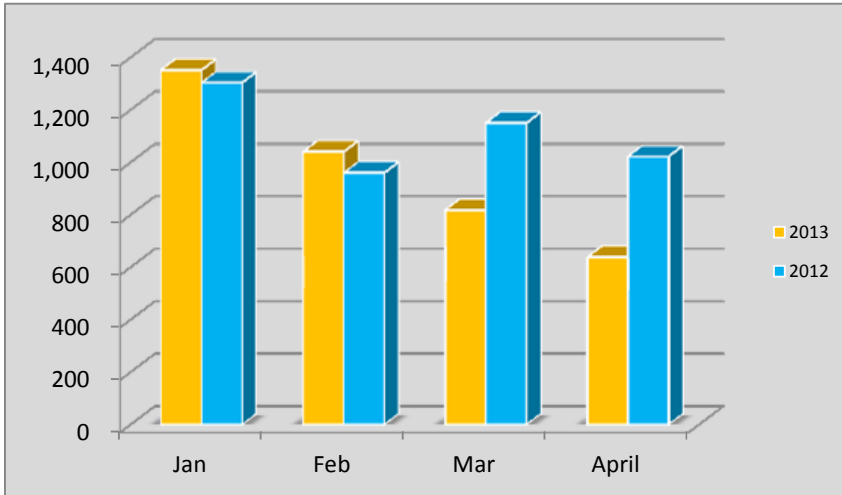
MONTHS	2013	2012	ACT.CHG.	%CHANGE
January	585	598	-13	-2%
February	691	667	24	4%
March	770	677	93	14%
April	485	610	-125	-20%
TOTAL	2,531	2,552	(21)	-0.8%

Source: SLASPA

* Representative of arrivals from Rodney Bay Marina Only

MARIGOT BAY YACHT ARRIVALS

Months	2013	2012	ACT. CHG.	% CHANGE
Jan	1,352	1,304	48	3.7%
Feb	1,040	960	80	8.3%
Mar	818	1,150	(332)	-28.9%
April	638	1,022	(384)	-37.6%
TOTAL	3,848	4,436	(588)	-13.3%



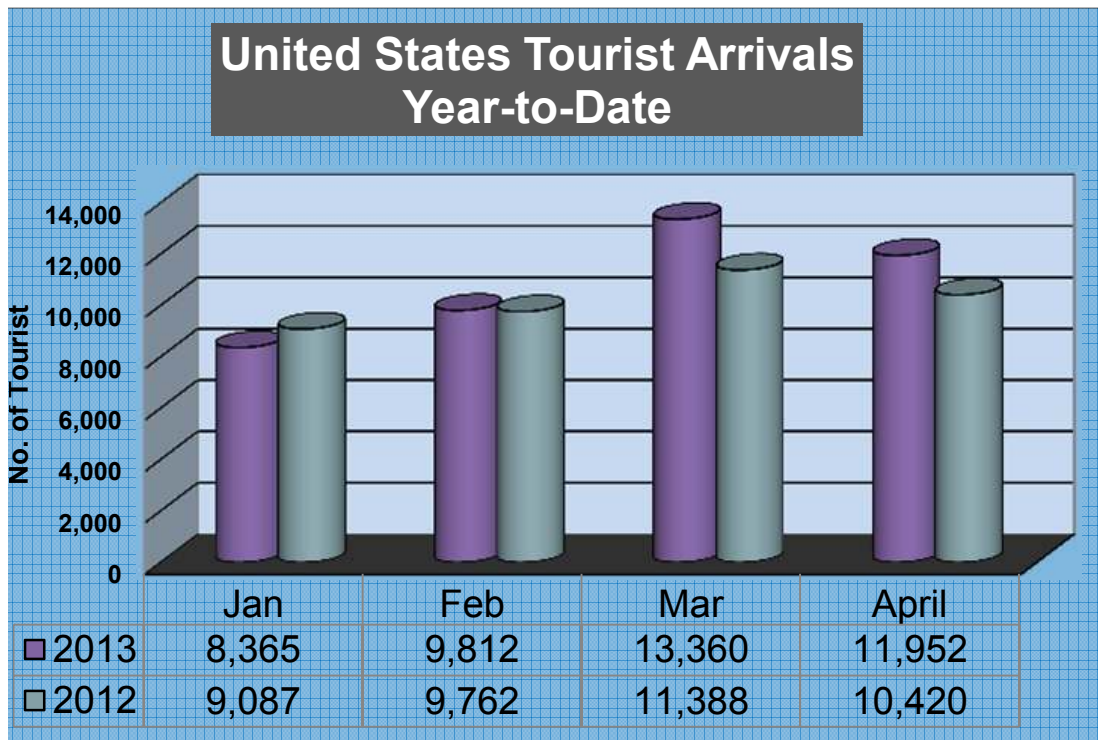
Yacht Calls

MONTHS	2013	2012	ACT.CHG.	%CHANGE
Jan	259	441	(182)	-41.3%
Feb	196	320	(124)	-38.8%
Mar	186	315	(129)	-41.0%
April	156	262	(106)	-40.5%
TOTAL	797	1,338	(541)	-40.4%

Source: SLASPA

US Tourist Arrivals By Month

Months	2013	2012	ACT. CHG.	% Change
Jan	8,365	9,087	(722)	-7.9%
Feb	9,812	9,762	50	0.5%
Mar	13,360	11,388	1,972	17.3%
April	11,952	10,420	1,532	14.7%
Total	43,489	40,657	2,832	7.0%



USA Tourist Arrivals by State YTD (March) 2013/2012

States by Regions	2013					2012					% Change
	Jan	Feb	Mar	April	YTD	Jan	Feb	Mar	April	YTD	
North East	3,896	4,473	5,870	5,237	19,476	4,628	4,897	4,996	4,334	18,855	3.3%
Connecticut	230	351	326	544	1,451	232	311	361	406	1,310	10.8%
Maine	66	80	67	65	278	59	78	80	79	296	-6.1%
Massachusetts	399	580	549	571	2,099	351	482	611	402	1,846	13.7%
Rhode Island	33	59	64	54	210	28	66	67	33	194	8.2%
Vermont	99	114	163	111	487	82	137	76	90	385	26.5%
New York	1,518	1,836	2,661	1,870	7,885	2,206	2,141	1,894	1,735	7,976	-1.1%
New Jersey	533	479	785	797	2,594	573	530	631	612	2,346	10.6%
Maryland	313	263	313	316	1,205	350	329	357	275	1,311	-8.1%
Pennsylvania	520	496	708	628	2,352	626	611	625	483	2,345	0.3%
New Hampshire	77	108	93	171	449	57	106	127	93	383	17.2%
Delaware	38	48	61	35	182	31	38	71	56	196	-7.1%
District of Colum	44	28	62	52	186	11	39	74	44	168	10.7%
West Virginia	26	31	18	23	98	22	29	22	26	99	-1.0%
Mid West	1,581	2,240	2,412	1,693	7,926	1,441	1,709	1,986	1,340	6,476	22.4%
Iowa	89	116	91	44	340	78	50	101	37	266	27.8%
Illinois	317	372	484	347	1,520	242	381	452	276	1,351	12.5%
Indiana	99	128	167	122	516	103	122	208	159	592	-12.8%
Kentucky	53	48	88	59	248	48	58	73	57	236	5.1%
Missouri	87	86	81	84	338	69	77	84	70	300	12.7%
Minnesota	226	403	278	205	1,112	138	205	208	74	625	77.9%
Wisconsin	230	263	345	163	1,001	236	205	183	210	834	20.0%
Dakota, North	13	85	30	20	148	33	21	29	12	95	55.8%
Dakota, South	27	42	16	11	96	21	51	24	13	109	-11.9%
Ohio	192	272	372	239	1,075	186	207	252	217	862	24.7%
Wyoming	25	9	17	32	83	17	19	12	17	65	27.7%
Michigan	194	349	376	319	1,238	220	268	335	174	997	24.2%
Montana	29	67	67	48	211	50	45	25	24	144	46.5%
South East	1,205	1,367	2,236	2,180	6,988	1,278	1,300	1,978	1,975	6,531	7.0%
Alabama	54	42	144	123	363	72	73	97	107	349	4.0%
Florida	495	496	780	868	2,639	558	518	773	719	2,568	2.8%
Georgia	209	268	482	458	1,417	230	234	403	398	1,265	12.0%
Mississippi	15	26	30	76	147	20	23	40	47	130	13.1%
North Carolina	224	251	479	324	1,278	236	265	364	373	1,238	3.2%
South Carolina	100	163	122	162	547	71	84	133	144	432	26.6%
Tennessee	108	121	199	169	597	91	103	168	187	549	8.7%
South West	805	847	1,556	1,625	4,833	769	912	1,273	1,503	4,457	8.4%
Alaska	4	3	3	-	10	3	3	1	-	7	42.9%
Arkansas	24	38	107	80	249	22	23	45	38	128	94.5%
Arizona	41	69	115	118	343	45	55	81	162	343	0.0%
Colorado	154	136	188	174	652	111	138	269	190	708	-7.9%
Hawaii	4	4	4	-	12	5	1	3	-	9	33.3%
Kansas	43	59	91	86	279	59	77	59	59	254	9.8%
Louisiana	76	69	168	208	521	94	109	106	185	494	5.5%
Nebraska	49	56	52	31	188	49	73	45	39	206	-8.7%
New Mexico	19	6	14	21	60	14	14	13	27	68	-11.8%
Oklahoma	40	29	91	82	242	37	25	62	64	188	28.7%
Texas	322	338	687	776	2,123	293	329	533	666	1,821	16.6%
Utah	29	40	36	49	154	37	65	56	73	231	-33.3%
West Coast	439	521	637	732	2,329	479	541	600	746	2,366	-1.6%
California	329	367	504	589	1,789	332	358	454	600	1,744	2.6%
Idaho	15	50	19	24	108	52	44	20	19	135	-20.0%
Nevada	37	30	39	69	175	34	66	50	60	210	-16.7%
Oregon	32	43	57	27	159	39	44	54	41	178	-10.7%
West Virginia	26	31	18	23	98	22	29	22	26	99	-1.0%
Not Stated	439	364	649	485	1,937	492	403	555	522	1,972	-1.8%
Total	8,365	9,812	13,360	11,952	43,489	9,087	9,762	11,388	10,420	40,657	7.0%

USA Tourist Arrivals by Region YTD (March) 2013/2012

States by Regions	2013					2012					% Change 2013/12
	Jan	Feb	Mar	April	Total	Jan	Feb	Mar	April	Total	
North East	3,896	4,473	5,870	5,237	19,476	4,628	4,897	4,996	4,334	18,855	3.3%
Mid West	1,581	2,240	2,412	1,693	7,926	1,441	1,709	1,986	1,340	6,476	22.4%
South East	1,205	1,367	2,236	2,180	6,988	1,278	1,300	1,978	1,975	6,531	7.0%
South West	805	847	1,556	1,625	4,833	769	912	1,273	1,503	4,457	8.4%
West Coast	443	525	641	732	2,341	484	542	603	746	2,375	-1.4%
Not Stated	435	360	645	485	1,925	487	402	552	522	1,963	-1.9%
Total	8,365	9,812	13,360	11,952	43,489	9,087	9,762	11,388	10,420	40,657	7.0%

Canada Arrivals By Month

Months	2013	2012	ACT. CHG.	% Change
Jan	5,137	5,397	(260)	-4.8%
Feb	5,013	5,711	(698)	-12.2%
Mar	6,070	5,456	614	11.3%
April	2,890	3,460	(570)	-16.5%
Total	19,110	20,024	(914)	-4.6%

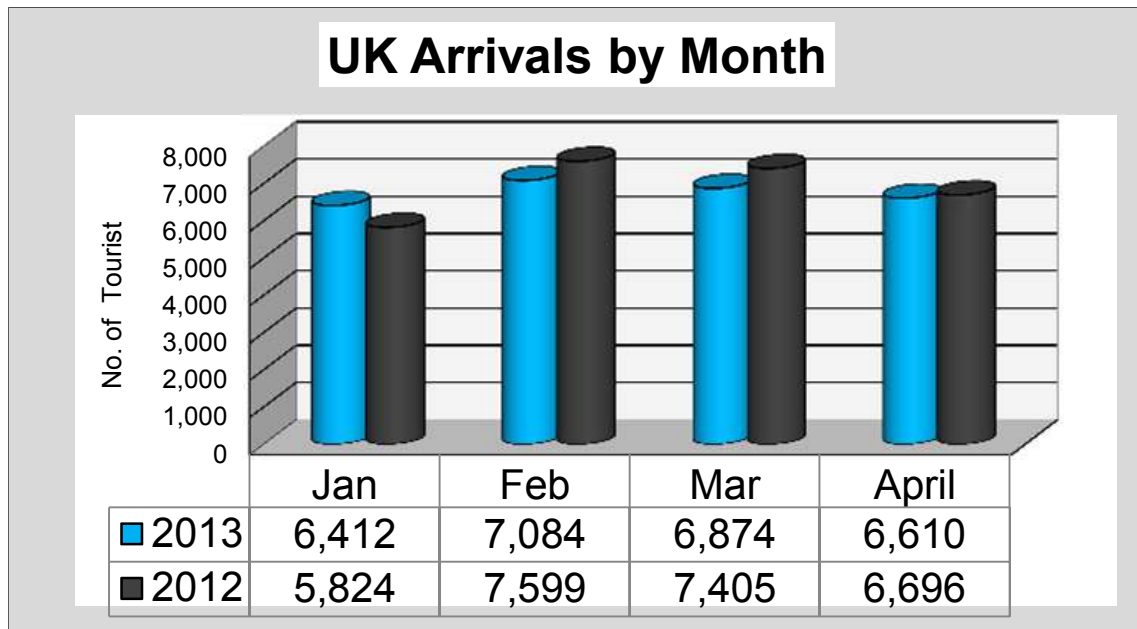


Canada Tourist Arrivals by Province January - March 2013/2012

Province	2013					2012					% Change 2013/12
	Jan	Feb	Mar	April	YTD	Jan	Feb	Mar	April	YTD	
Alberta	382	357	397	324	1,460	391	450	463	405	1,709	-14.6%
British Columbia	166	168	253	137	724	195	197	180	144	716	1.1%
Manitoba	185	168	139	29	521	95	163	60	37	355	46.8%
New Brunswick	39	46	56	37	178	56	51	88	36	231	-22.9%
New Foundland & Labrador	57	66	59	46	228	12	30	51	50	143	59.4%
Northwest Territories	33	7	10	1	51	2	2	3	5	12	325.0%
Nova Scotia	49	61	119	45	274	51	64	97	82	294	-6.8%
Nunavut	6	3	2	2	13	2	2	0	7	11	18.2%
Ontario	2,894	3,028	3,441	1,888	11,251	2,898	3,267	3,083	1,892	11,140	1.0%
Prince Edward Island	11	16	24	1	52	2	8	2	10	22	136.4%
Quebec	1,093	892	1,471	347	3,803	1,528	1,264	1,275	733	4,800	-20.8%
Saskatchewan	176	172	67	17	432	153	196	98	46	493	-12.4%
Not Stated	46	29	32	16	123	12	17	56	13	98	25.5%
Total	5,137	5,013	6,070	2,890	19,110	5,397	5,711	5,456	3,460	20,024	-4.6%

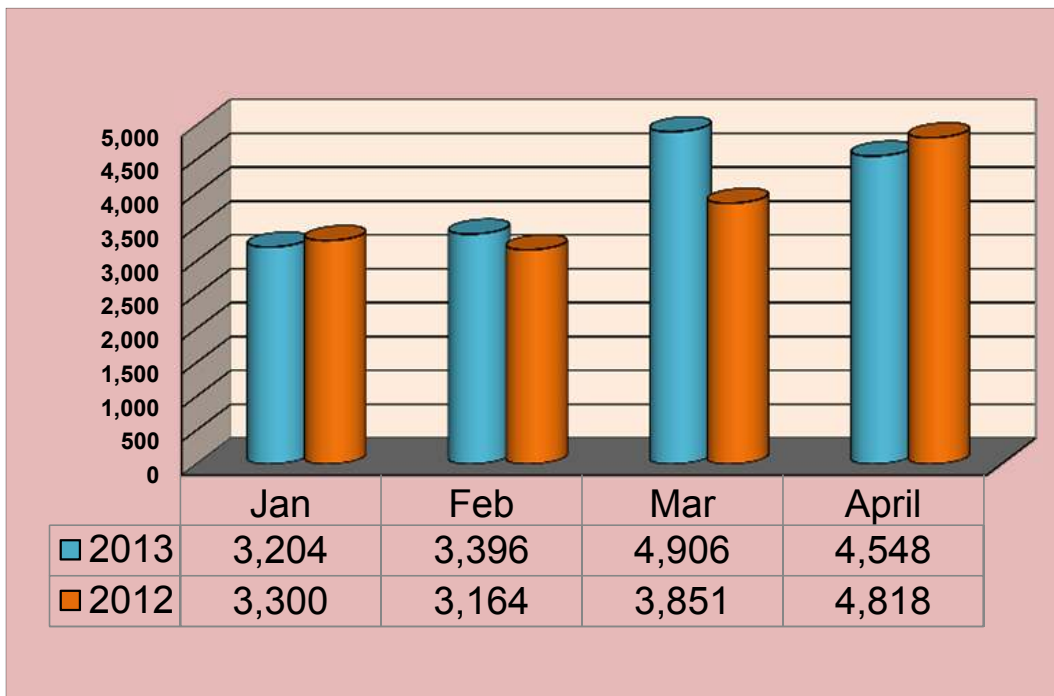
United Kingdom Arrivals By Month

Months	2013	2012	ACT. CHG.	% Change
Jan	6,412	5,824	588	10.1%
Feb	7,084	7,599	(515)	-6.8%
Mar	6,874	7,405	(531)	-7.2%
April	6,610	6,696	(86)	-1.3%
Total	26,980	27,524	(544)	-2.0%



Caribbean Arrivals By Month

Months	2013	2012	ACT. CHG.	% Change
Jan	3,204	3,300	(96)	-2.9%
Feb	3,396	3,164	232	7.3%
Mar	4,906	3,851	1,055	27.4%
April	4,548	4,818	(270)	-5.6%
Total	16,054	15,133	921	6.1%



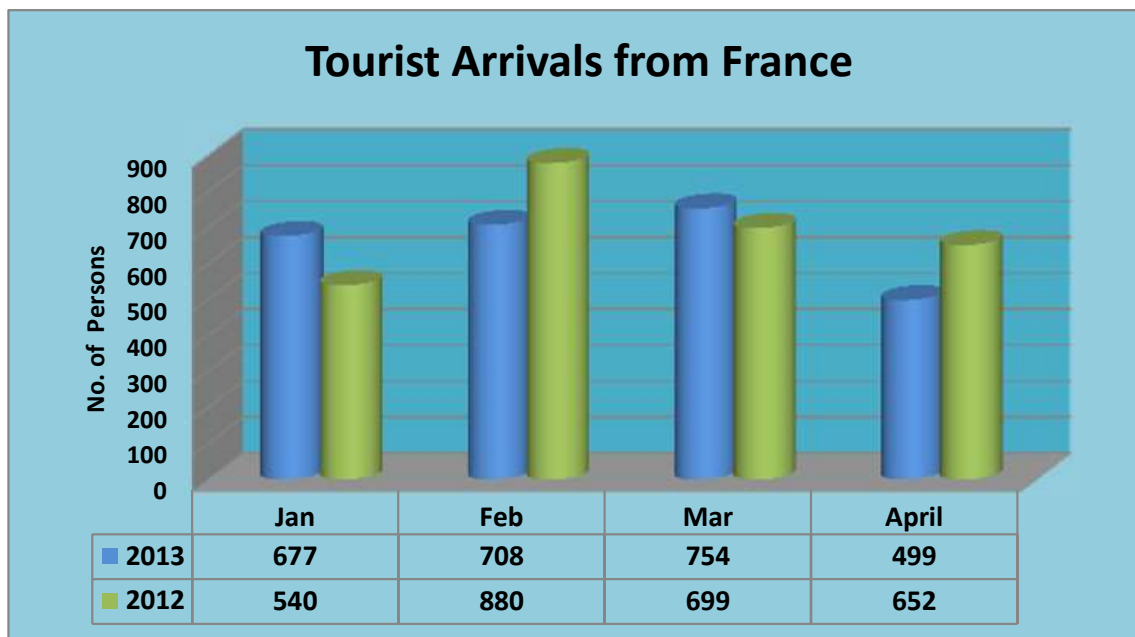
TOURIST ARRIVALS FROM THE CARIBBEAN, APRIL 2013/2012

COUNTRIES	2013					2012					% Change 2013/12
	Jan	Feb	Mar	April	YTD	Jan	Feb	Mar	April	YTD	
CARICOM *	2,459	2,124	3,120	3,208	10,911	2,112	2,141	2,947	3,114	10,314	16.4%
OECS	524	488	839	746	2,597	921	616	878	934	3,349	-43.1%
Antigua & Barbuda	113	116	187	165	581	210	174	273	208	865	-46.2%
Dominica	107	110	231	139	587	225	119	164	341	849	-52.4%
Grenada	99	88	127	140	454	180	89	176	115	560	-45.0%
Montserrat	5	2	7	3	17	6	13	5	3	27	-16.7%
St Kitts & Nevis	50	51	70	80	251	50	52	48	60	210	0.0%
St Vincent & Grenadines	150	121	217	219	707	250	169	212	207	838	-40.0%
OTHER CARICOM	1,935	1,636	2,281	2,462	8,314	1,191	1,525	2,069	2,180	6,965	62.5%
Barbados	475	338	577	669	2059	430	529	769	612	2340	10.5%
Belize	6	6	4	19	35	10	10	5	3	28	-40.0%
Guyana	163	79	177	132	551	120	98	135	127	480	35.8%
Jamaica	140	116	99	162	517	150	117	150	133	550	-6.7%
Trinidad & Tobago	1,069	1,057	1,330	1,386	4842	400	704	931	1,196	3,231	167.3%
Bahamas	12	12	11	19	54	25	13	12	29	79	-52.0%
Anguilla	15	2	19	10	46	6	20	13	18	57	150.0%
Bermuda	5	7	10	26	48	20	9	25	9	63	-75.0%
Virgin Island	47	14	33	32	126	20	22	28	46	116	135.0%
Turks & Caicos Island	3	5	21	7	36	10	3	1	7	21	-70.0%
FRENCH WEST INDIES	585	1,143	1,600	1,109	4,437	865	883	736	1,449	3,933	-32.4%
Martinique	531	1,066	1,506	959	3,103	720	800	696	1288	3,504	-26.3%
Guadeloupe	54	77	94	150	375	145	83	40	161	429	-62.8%
DUTCH WEST INDIES	10	6	10	9	35	70	14	9	60	153	-85.7%
Aruba	2	3	2	3	10	11	6	3	7	27	-81.8%
Bonaire	1	1	1	1	4	11	0	0	1	12	-90.9%
Curacao	7	2	7	5	21	12	8	6	50	76	-41.7%
St Maarten	0	0	0	-	0	26	0	0	2	28	-100.0%
Nether Lands	0	0	0	0	0	10	0	0	-	10	-100.0%
OTHER CARIBBEAN	150	123	176	222	671	253	126	159	195	733	-40.7%
Cuba	25	25	42	56	148	17	7	9	16	49	47.1%
Dominican Republic	8	8	16	8	40	17	14	10	22	63	-52.9%
Haiti	32	20	26	54	132	12	9	8	19	48	166.7%
Puerto Rico	14	25	22	20	81	97	38	56	59	250	-85.6%
Suriname	2	5	16	5	28	15	7	7	5	34	-86.7%
US Virgin Islands	36	28	24	25	113	50	24	25	35	134	-28.0%
Other/Not Stated	33	12	30	54	129	45	27	44	39	155	-26.7%
TOTAL	3,204	3,396	4,906	4,548	16,054	3,300	3,164	3,851	4,818	15,133	6.1%

* Caricom countries consist of "OECS & "Other Caricom"

Tourist Arrivals From France By Month

Months	2013	2012	ACT. CHG.	% Change
Jan	677	540	137	25.4%
Feb	708	880	(172)	-19.5%
Mar	754	699	55	7.9%
April	499	652	(153)	-23.5%
Total	2,638	2,771	(133)	-4.8%



German Tourist Arrivals By Month

Months	2013	2012	ACT. CHG.	% Change
Jan	475	333	142	42.6%
Feb	421	425	(4)	-0.9%
Mar	543	543	0	0.0%
April	134	218	(84)	-38.5%
Total	1,573	1,519	54	3.6%

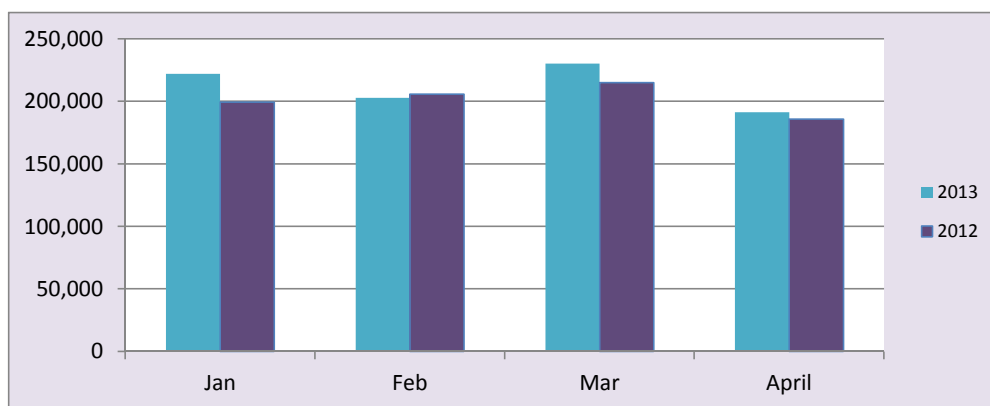


April, 2013 Length of Stay						
Country	1 - 3 Days	4 - 7 Days	8 - 14 Days	15+ Days	Total (excl . Not Stated)	Avg. Length of stay
Total	2,645	16,054	7,928	1,145	27,772	7.98
United States	550	8,750	2,459	193	11,952	7.02
Canada	75	2,071	656	88	2,890	8.11
Europe	435	2,675	4,268	573	7,951	10.3
Major Europe	357	2,488	3,994	513	352	10.34
France	61	235	170	33	499	8.28
Germany	17	54	47	16	134	9.17
Italy	16	25	19	16	76	10.8
United Kingdom	259	2,169	3,734	448	6,610	10.52
Rest of Europe	47	146	229	43	465	9.56
Austria	3	15	9	9	36	9.25
Belgium	3	10	4	2	19	9.32
Denmark	1	0	1	0	2	7.5
Ireland	12	35	72	10	129	9.73
Norway	0	7	5	2	14	8.71
Portugal	1	3	0	0	4	5.5
Spain	5	9	14	1	29	8.76
Sweden	5	16	11	3	35	9
Switzerland	13	24	56	7	100	9.77
Other Europe	31	41	45	17	134	10.19
Caribbean	1,483	2,352	449	264	4,548	6.28
C'wealth Caribbean	1,019	1,795	253	148	3,215	6.16
OECS/CARICOM	325	317	67	40	749	6.27
Antigua and Barbuda	67	68	11	19	165	7.67
Dominica	70	49	12	8	139	6.06
Grenada	40	89	10	1	140	5.12
Montserrat	5	0	1	0	6	4
St. Kitts and Nevis	43	22	11	4	80	5.91
St. Vincent & Gren.	100	89	22	8	219	6.28
Other Caricom	678	1,434	177	98	2,387	6.07
Barbados	213	376	51	29	669	5.86
Belize	9	5	5	0	19	4.89
Guyana	23	73	26	10	132	7.63
Jamaica	44	65	25	28	162	12.85
Trinidad and Tobago	386	908	64	28	1,386	5.14
Bahamas	3	7	6	3	19	13.05
Other C'wealth Carib	16	44	9	10	79	8.06
Anguilla	5	4	0	1	10	5.8
Bermuda	1	17	2	6	26	9.58
British Virgin Is.	9	16	6	1	32	6.13
Cayman Islands	1	1	0	2	4	22.5
French West Indies	426	463	166	101	1,156	6.43
St.Martin	7	35	3	2	47	6.81
Martinique	395	310	156	98	959	6.47
Guadeloupe	24	118	7	1	150	6.03
Dutch West Indies	3	3	2	1	9	11.89
Curacao	1	2	1	1	5	17.2
Other Caribbean	35	91	28	14	168	7.16
Cuba	11	26	13	6	56	8.77
Dominican Republic	2	5	1	0	8	5.13
Haiti	6	40	6	2	54	6.13
Puerto Rico	8	9	3	0	20	4.45
US Virgin Islands	5	10	4	6	25	9.08
Suriname	3	1	1	0	5	4.8
South America	29	85	36	7	157	11.08
Brazil	6	25	3	3	37	15.54
Venezuela	17	13	4	3	37	15.16
Other South America	5	36	21	1	63	7.35
Central America	19	22	2	0	43	4.26
Other	48	88	53	17	206	9.18

Source: SLTB

Bed-Nights by Month *

Month	2013	2012	ACT. CHG.	% Change
Jan	222,203	199,514	22,689	11.4%
Feb	203,004	205,891	(2,887)	-1.4%
Mar	230,232	215,087	15,145	7.0%
April	191,328	186,008	5,320	2.9%
Total	846,767	806,500	40,267	5.0%



Bed-Nights by Markets YTD - 2013

Markets	2013	2012	ACT.CHG.	% CHANGE
USA	300,489	278,812	21,677	7.8%
UK	254,813	236,754	18,059	7.6%
Caribbean	66,178	63,314	2,864	4.5%
Canada	153,076	158,741	(5,665)	-3.6%
Rest of Europe	32,272	27,446	4,826	17.6%
Germany	11,905	12,502	(597)	-4.8%
France	18,676	18,447	229	1.2%
Rest of World	9,358	10,484	(1,126)	-10.7%
Total	846,767	806,500	40,267	5.0%

* Bednights figures are total arrivals, less persons staying in private accommodation, times Avg. Length of Stay

Summary Report of Visitor Arrivals

Type of Visitor	2013	2012	Difference	% Increase
Stay Over	115,366	112,836	2,530	2.2%
Cruise	303,840	321,832	(17,992)	-5.6%
Yachts (Rodney Bay Marina)	12,108	12,172	(64)	-0.5%
Yachts (Marigot Bay)	3,848	4,436	(588)	-13.3%
Total	435,162	451,276	(16,114)	-3.6%

TOURIST ARRIVALS BY MARKET, JANUARY-APRIL 2013/2012

Markets	2013	2012	ACT.CHG.	% CHANGE
USA	43,489	40,657	2,832	7.0%
UK	26,980	27,524	(544)	-2.0%
Caribbean	16,054	15,133	921	6.1%
Canada	19,110	20,024	(914)	-4.6%
Rest of Europe	3,757	3,390	367	10.8%
Germany	1,573	1,519	54	3.6%
France	2,638	2,771	(133)	-4.8%
Rest of World	1,765	1,818	(53)	-2.9%
Total	115,366	112,836	2,530	2.2%